

**WEBINAR**

# **BFU UNIVERSITY**

## **Bicycle Friendly University 101**

Tuesday, June 4th @ 3:30 PM ET



**DERO**

A PLAYCORE Company

**BIKELEAGUE.ORG/WEBINARS**



# HOUSEKEEPING

- » Webinar is being recorded, will be posted at:
  - » [youtube.com/bikeleague](https://www.youtube.com/bikeleague) (@BikeLeague)
  - » [bikeleague.org/webinars](https://bikeleague.org/webinars)
- » Closed captions are available
  - » Can be hidden or shown from the Zoom menu on your screen:
  - » Click “Show Captions” / “Hide Captions”
- » Feel free to type your questions into the Q&A at any time!





**Amelia Neptune**  
Director, Bicycle Friendly  
America Program



**Erika Benti**  
Marketing & Communications  
Coordinator,  
Parking & Transportation  
Services



**COLORADO STATE  
UNIVERSITY**



**Lindsey Lyons**  
Director of Sustainability  
Learning,  
Center for Sustainability  
Education

**Dickinson**



**Steve Sanders**  
Higher Education  
Business  
Development



**DERO**  
A PLAYCORE Company





# BICYCLE FRIENDLY UNIVERSITY 101

**Amelia Neptune**  
Director, Bicycle Friendly America Program  
League of American Bicyclists

June 4, 2024



# LEAGUE OF AMERICAN BICYCLISTS

BIKELEAGUE.ORG



**SINCE 1880...**



Our mission is

to lead the movement to  
create a Bicycle Friendly  
America for everyone.





# SMART CYCLING MANUAL



# THE LEAGUE » SMART CYCLING



## Benchmarking Bike Networks

# NATIONAL 20 BIKE SUMMIT 24 SLOW ROADS

MARCH 19-21, 2024 • MLK JR. MEMORIAL LIBRARY • WASHINGTON, D.C.

## SMART CYCLING QUICK GUIDE

## WHERE WE RIDE

Analysis of bicycle commuting in American cities

REPORT ON 2013 AMERICAN COMMUNITY SURVEY DATA BY THE LEAGUE OF AMERICAN BICYCLISTS



## ENGAGING MORE WOMEN IN BICYCLING

Key steps and best practices to improve and advance women's specific bicycle advocacy

CORNISH JONES MARCH 2015

# I VOTE

#IBIKEIVOTE



LEAGUE OF AMERICAN BICYCLISTS presents

# BIKE MONTH

MAY 2023

BIKELEAGUE.ORG/BIKEMONTH



## ACTIVE TRANSPORTATION LEADERSHIP INSTITUTE

THE LEAGUE OF AMERICAN BICYCLISTS hereby makes it known that

I have participated and completed the League of American Bicyclists' Bike Advocacy Training Workshop which has given expert knowledge to be a

### LEAGUE CYCLING ADVOCATE

This title provides the participant with the official ability to advocate in their community using the skills gained during the League of American Bicyclists' Bike Advocacy Training Workshop so that they may help others enjoy cycling in their community.

Signature: \_\_\_\_\_ Location: \_\_\_\_\_ Date: \_\_\_\_\_



THE LEAGUE » BICYCLE FRIENDLY AMERICA



**BICYCLE FRIENDLY STATE**



**BICYCLE FRIENDLY COMMUNITY**



**BICYCLE FRIENDLY BUSINESS**



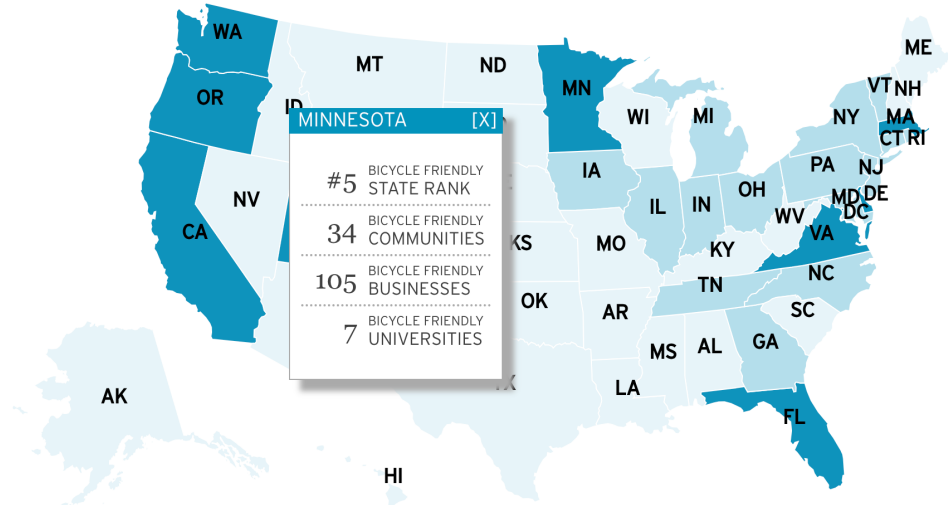
**BICYCLE FRIENDLY UNIVERSITY**





# » Explore BFA Awards by state: [bikeleague.org/bfa](https://bikeleague.org/bfa)

TOP 10 #11-25 #26-50



## Minnesota

Community	Award	Population	Jurisdiction	Land Use	
Albert Lea	Bronze	17703	Town/City/Municipality	Low density suburban	📍📍
Battle Lake	Bronze	857	Town/City/Municipality	Small town	📍📍
Bemidji	Bronze	14319	Town/City/Municipality		📍📍
Brainerd	Bronze	13592	Town/City/Municipality	Urban core surrounded by low density suburban areas	📍📍
Crosby	Bronze	2344	Town/City/Municipality	Small town	📍📍
Detroit Lakes	Bronze	9289	Town/City/Municipality	Small town	📍📍
Duluth	Bronze	86265	Town/City/Municipality	Urbanized area	📍📍
Edina	Bronze	53494	Town/City/Municipality	Suburban	📍📍
Fargo-Moorhead Metropolitan Area	Bronze	202509	Metropolitan Planning Organization/Council of Governments	Urban core surrounded by low density suburban areas	📍📍
Fergus Falls	Silver	14187	Town/City/Municipality	Urbanized area	📍📍
Frazee	Bronze	1376	Town/City/Municipality	Small town	📍📍
Grand Marais	Silver	1351	Town/City/Municipality	Small town	📍📍
Greater Grand Forks	Bronze	68160	Metropolitan Planning Organization/Council of Governments	Urbanized area	📍📍
Hennepin County	Silver	1281565	County/Borough/Parish	Suburban	📍📍
Hopkins	Bronze	19079	Town/City/Municipality	Urbanized area	📍📍
Hutchinson	Silver	14599	Town/City/Municipality	Small town	📍📍
Jackson	Silver	3219	Town/City/Municipality	Rural	📍📍
La Crescent	Bronze	5276	Town/City/Municipality	Suburban	📍📍
Mankato & North Mankato	Bronze	56524	Town/City/Municipality	Urban	📍📍
Marshall	Bronze	13421	Town/City/Municipality	Small town	📍📍
Minneapolis	Gold	425403	Town/City/Municipality	Urbanized area	📍📍
New Ulm	Bronze	13242	Town/City/Municipality	Rural	📍📍
Richfield	Silver	36994	Town/City/Municipality	Urban	📍📍
Rochester	Bronze	121465	Town/City/Municipality	Urbanized area	📍
Saint Paul	Silver	311527	Town/City/Municipality	Urban core surrounded by low density suburban areas	📍📍
Sartell	Bronze	17752	Town/City/Municipality	Low density suburban	📍📍
St. Cloud	Bronze	68001	Town/City/Municipality	Urban core surrounded by low density suburban areas	📍📍

### BICYCLE FRIENDLY STATE REPORT CARD

WE'RE BUILDING A BICYCLE FRIENDLY AMERICA FOR EVERYONE

4% PERCENT OF STATE IN BFC SILVER

STATE ADVOCACY GROUP: FLORIDA BICYCLE ASSOCIATION

FLORIDA #8 NATIONAL RANK (TOP 50)

#2 REGIONAL RANK SOUTHERN (TOP 10)

Category	Grade	Description
Infrastructure & Funding	A-	Considers the use of federal transportation funding, state transportation funding, and the existence of bicycle infrastructure in the state.
Education & Encouragement	A	Considers bicycling model programs, bicycling, their goals to increase bicycling, and whether the state sponsors a conference on bicycling.
Traffic Laws & Practices	B	Considers traffic laws related to bicyclist safety and practices for automated enforcement and preventing racial disparities in traffic law enforcement.
Policies & Programs	A	Considers Complete Streets policies and programmatic support for environmental bicycling improvements, including staffing and integrating public health.
Evaluation & Planning	B	Considers state bicycle plans, safety outcomes, guidance on bicycle facilities, data collection on bicycling and walking, and public engagement of bicyclists.

Based on the information we obtained for Florida, the League of American Bicyclists believes the following actions will improve the safety, comfort, and accessibility of bicycling in Florida.

Florida has a bicyclist fatality rate worse than the national average. According to NHTSA data, 36% of cyclists killed in Florida were killed on state DOT-owned roadways since 2015 despite the state owning only 10% of all roadways. This is the third largest over-representation among states. Addressing safety on state-owned roadways is key to improving bicyclist safety in the state.

Florida has done a commendable job in investing federal funds into bicycling and walking projects. The state should continue to build on its processes that have led to those investments to ensure every project is improving conditions for people biking and walking, including during resurfacing, restoration and rehabilitation projects.

Florida's legislature strengthened its safe-passing law in 2021 and adopted a notable law that can improve group riding. Under the new law, cyclists riding in groups of 10 or fewer, after coming to a full stop, may proceed through the intersection as a group. This will allow groups to stay together better and more quickly clear intersections. Potential driver confusion can be mitigated through public education efforts.

Like several other states, Florida recently strengthened its driver education about bicycling and walking safety. At least 35 questions addressing bicycle and pedestrian safety are now required to be included in the bank of test questions for driver's license exams. This is a great step to ensuring that more drivers are aware of their responsibilities to people biking and walking.

Florida's fatality rates for people biking and walking are grim. Other data shows the state is making efforts to improve. The high-speed nature of many Florida roads presents an ongoing challenge to improving safety. The Safe System Approach pioneered by FHWA emphasizes the importance of speed in the survivability of crashes and Florida should consider how it can build for lower speeds over time.

Bicycle Friendly Actions	Progress?
Complete Streets Law/Policy	Yes
Safe Passing Law (gfr-)	Yes
Statewide bike plan last 10 years	Yes/No/Updated
2% or more federal funds on biked/ped	Yes
Bicycle Safety Emphasis Area	Yes

Federal Data on Biking	Rank
Ridership	0.6% of commuters biking to work (19/50)
Safety	22.9 fatalities per 10K bike commuters (45/50)
Spending	\$4.62 per capita FHWA spending on biking and walking (6/50)

SEE THE BICYCLE FRIENDLY STATE DATABASE MAP: [BIKELEAGUE.ORG/BFA/NBRUS](https://bikeleague.org/bfa/nbrus)

The Bicycle Friendly State ranking is based on a comprehensive survey—with over 100 data points—completed by state departments of transportation and state bicycling advocates. For more information, visit [bikeleague.org/bfa](https://bikeleague.org/bfa) or contact Kim McLeod at (202) 899-1233 or [kim@bikeleague.org](mailto:kim@bikeleague.org).

## Bicycle Friendly Communities BY RANK

As of Fall 2023, 480 communities are currently recognized as a Bronze, Silver, Gold, or Platinum Bicycle Friendly Community (BFC). See the full list of current BFCs at: [bikeleague.org/community](https://bikeleague.org/community).

Rank	Award	Count
1-349	Bronze	349
350-491	Silver	112
492-521	Gold	34
522-526	Platinum	5

## BICYCLE FRIENDLY BUSINESS

Rank	Award	Count
1-86	Platinum	86
87-355	Gold	228
356-924	Silver	399
925-1341	Bronze	628
TOTAL		1,341

See the full list at [bikeleague.org/business](https://bikeleague.org/business) May 2024

## Bicycle Friendly Universities by rank 2023

Rank	Award	Count
1-9	Platinum	9
10-40	Gold	31
41-109	Silver	68
110-112	Bronze	112

See the full list at [bikeleague.org/university](https://bikeleague.org/university)

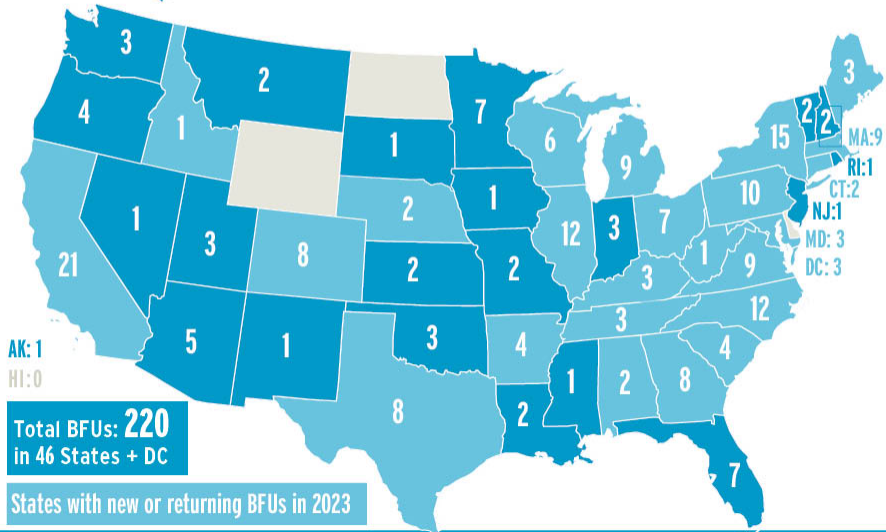




# BICYCLE FRIENDLY UNIVERSITY



## Bicycle Friendly Universities BY STATE in 2023



Total BFUs: 220  
in 46 States + DC

States with new or returning BFUs in 2023

See the full list at [bikeleague.org/university](https://bikeleague.org/university)

[bikeleague.org/university](https://bikeleague.org/university)



Stanford University





# RECOGNITION & FEEDBACK: Roadmap and Motivation to Improve



**BICYCLE FRIENDLY UNIVERSITY**

**TEXAS SOUTHMOST COLLEGE**  
BROWNSVILLE, TX

*Feedback Report*

**2018 HONORABLE MENTION**

WHILE TEXAS SOUTHMOST COLLEGE WAS DESIGNATED AS AN HONORABLE MENTION in the Bicycle Friendly University program this year, reviewers are optimistic of your commitment and look forward to working with you to reach an award level in the coming years. We strongly encourage you to use the following feedback to build on your momentum and continue to improve your campus for bicyclists. **When you are ready to reapply for the BFU award, we invite you to submit your next application free of charge using the discount code [BFU2018HM](#).**

**CAMPUS PROFILE**

BIKE PROGRAM WEBSITE: [HTTP://WWW.TSC.EDU/INDEX.PHP/CURRENT-STUDENTS/STUDENT-LIFE/BIKE.HTML](http://www.tsc.edu/index.php/current-students/student-life/bike.html)

INSTITUTION TYPE	STUDENT ENROLLMENT	% OF STUDENTS LIVING OFF-CAMPUS	CAMPUS ROADWAY MILES	% OF ROADS UNDER UNIVERSITY CONTROL
Community College	3816	100%	1	50%
CAMPUS TYPE	STAFF & FACULTY	AVERAGE DISTANCE TO CAMPUS	PATHWAY MILES	
Urban	346	5 miles	0.5	

Below, reviewers provided key recommendations to further promote bicycling at Texas Southmost College along with a menu of additional pro-cycling measures that can be implemented in the short and long term. We strongly encourage you to use this feedback to build on your momentum and continue to improve your campus for bicyclists.

There may also be initiatives, programs, and facilities that are not mentioned here that would benefit your bicycling culture, so please continue to try new things to increase your ridership, safety, and awareness!

**HIGHLIGHTS OF TEXAS SOUTHMOST COLLEGE'S 2018 BFU APPLICATION INCLUDE:**

- » *Bicycling Awareness and Safety Advocacy Committee*
- » *Bike Initiative, Knowledge & Education (BIKE) program*
- » *TSC support for Raul Alcala Challenge and other local signature bicycling events*
- » *Online Bike Rack Locations map.*

**KEY STEPS TO BRONZE:**

- » *Adopt a Bicycle Accommodation policy and provide ongoing training opportunities for engineering and planning staff related to accommodating bicyclists. (See Engineering)*

- » *Consider increasing the auto parking permit fee for students and employees. Use funds generated from increased parking fees to support active transportation initiatives on campus. (See Engineering)*
- » *Increase the amount of high quality bicycle parking at popular destinations on campus, and to upgrade the quality of all existing bike parking to meet APBP guidelines. (See Engineering)*
- » *Install air pumps and bicycle repair stations on campus. (See Campus Reviewer Comments)*
- » *Continue to build out the existing TSC-B.I.K.E. website to offer more resources and information for current and potential bicyclists. (See Education)*
- » *Offer Smart Cycling and cycling skills classes, bike commuter classes, and more frequent bike maintenance workshops on campus. (See Education)*
- » *Partner with a local League Cycling Instructor (LCI) or*

LEARN MORE » [WWW.BIKELEAGUE.ORG/UNIVERSITY](http://WWW.BIKELEAGUE.ORG/UNIVERSITY)





**BICYCLE FRIENDLY  
UNIVERSITY**

# WHO CAN APPLY?

**Any U.S. Higher Ed Institution with a physical campus:**

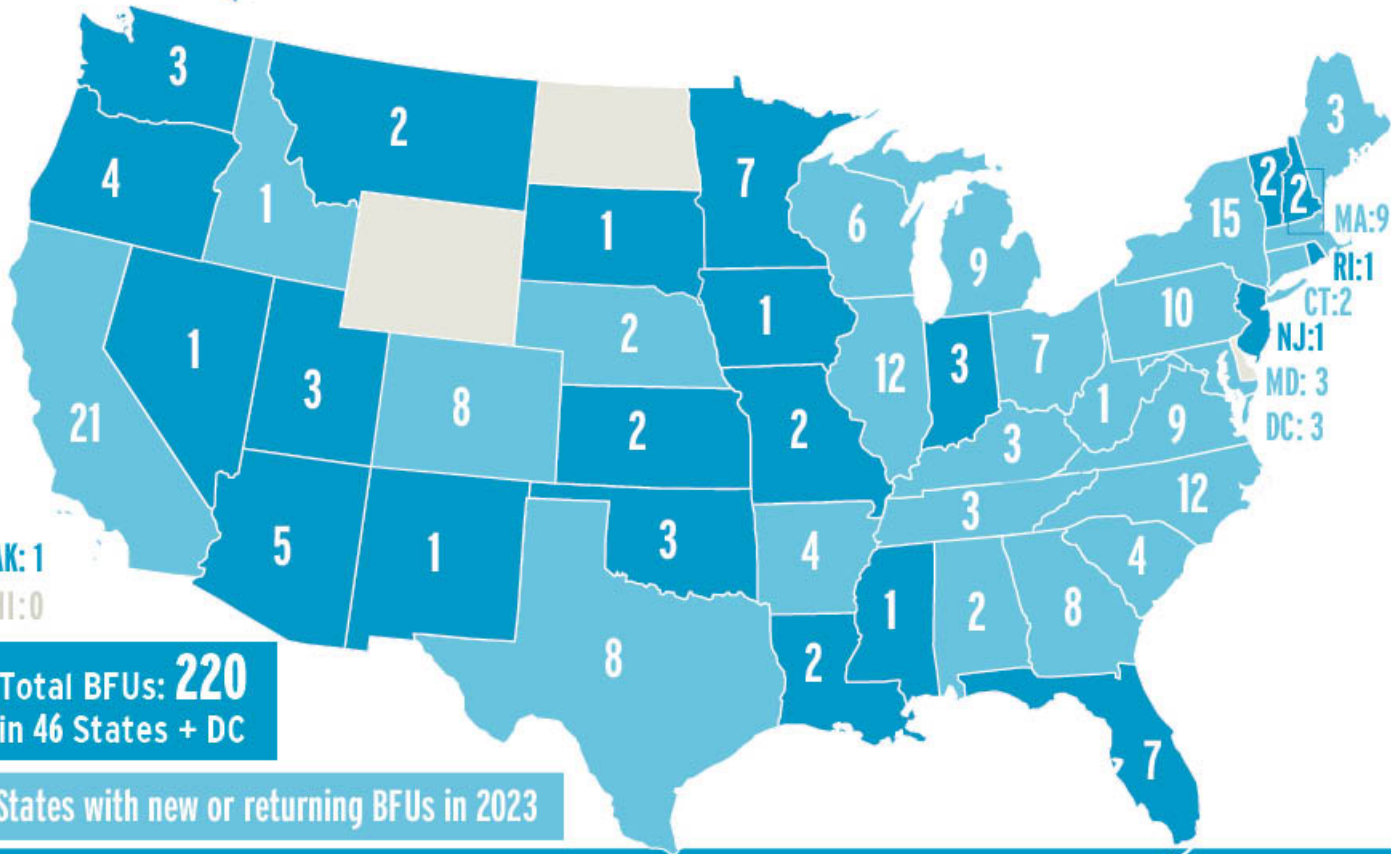
- Public University
- Private University
- Liberal Arts College
- Baccalaureate College
- Technical College
- Community College
- Career College
- Urban Campus
- Suburban Campus
- Rural Campus
- Commuter Campus
- Satellite Campus
- Etc.

...one application per campus





# Bicycle Friendly Universities BY STATE in 2023



Total BFUs: **220**  
in 46 States + DC

States with new or returning BFUs in 2023

See the full list at [bikeleague.org/university](https://bikeleague.org/university)

## Bicycle Friendly Universities by rank 2023

**9**  
Platinum

**31**  
Gold

**68**  
Silver

**112**  
Bronze

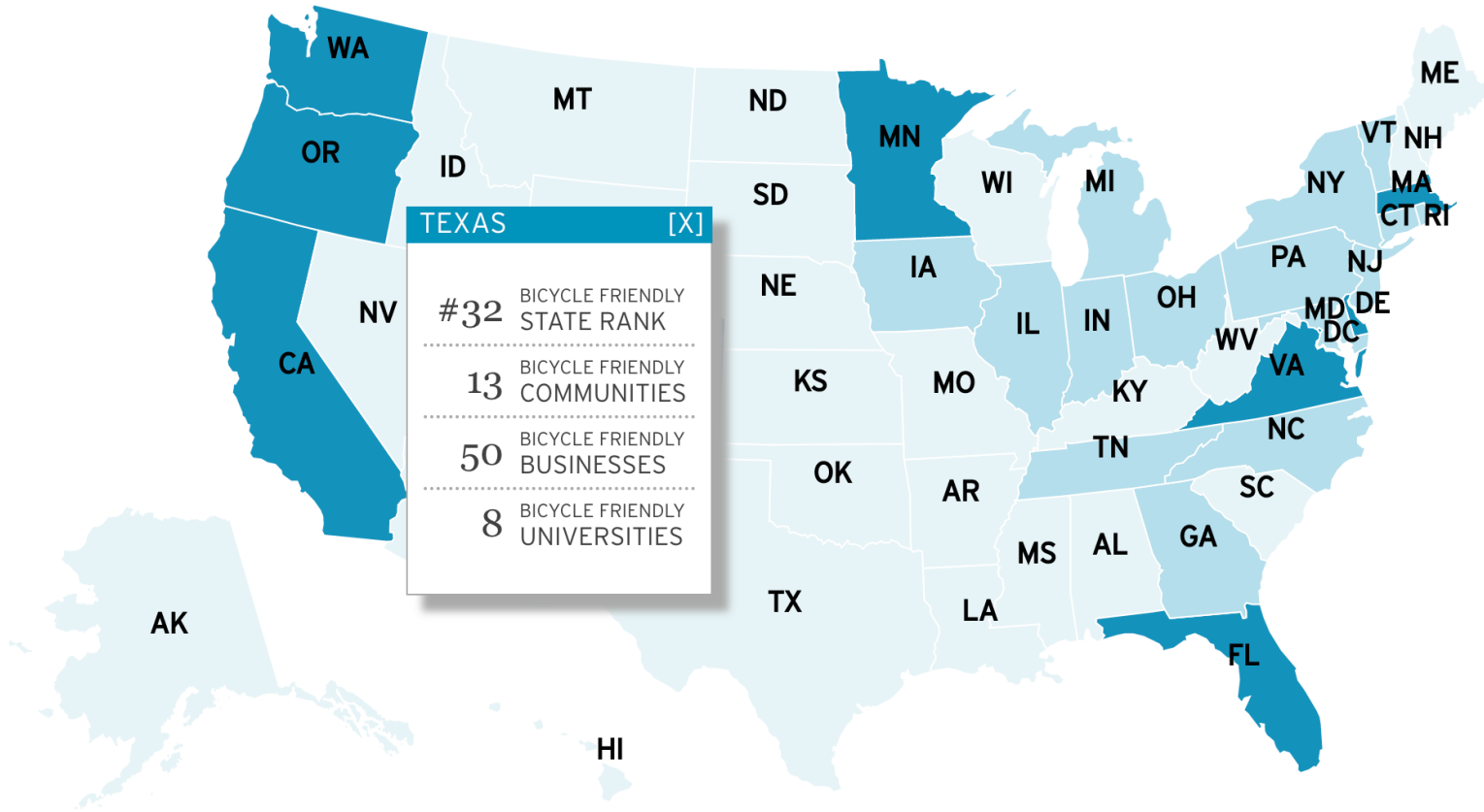
See the full list at  
[bikeleague.org/university](https://bikeleague.org/university)



**BICYCLE FRIENDLY  
UNIVERSITY**

» Interactive awards map:  
[bikeleague.org/bfa/awards](https://bikeleague.org/bfa/awards)





» Explore the interactive  
**BFA Awards Map:**  
[bikeleague.org/bfa/awards](https://bikeleague.org/bfa/awards)

University	Award	Enrollment	City	
The University of Texas at Arlington Libraries	Bronze	48072	Arlington	
University of Texas at Austin	Silver	50476	Austin	
Texas A&M University	Silver	74829	College Station	
Rice University	Silver	7536	Houston	
Texas Tech University	Silver	35893	Lubbock	
The University of Texas at Dallas	Bronze	29453	Richardson	
Texas State University	Bronze	38187	San Marcos	



# BFU APPLICATION CRITERIA



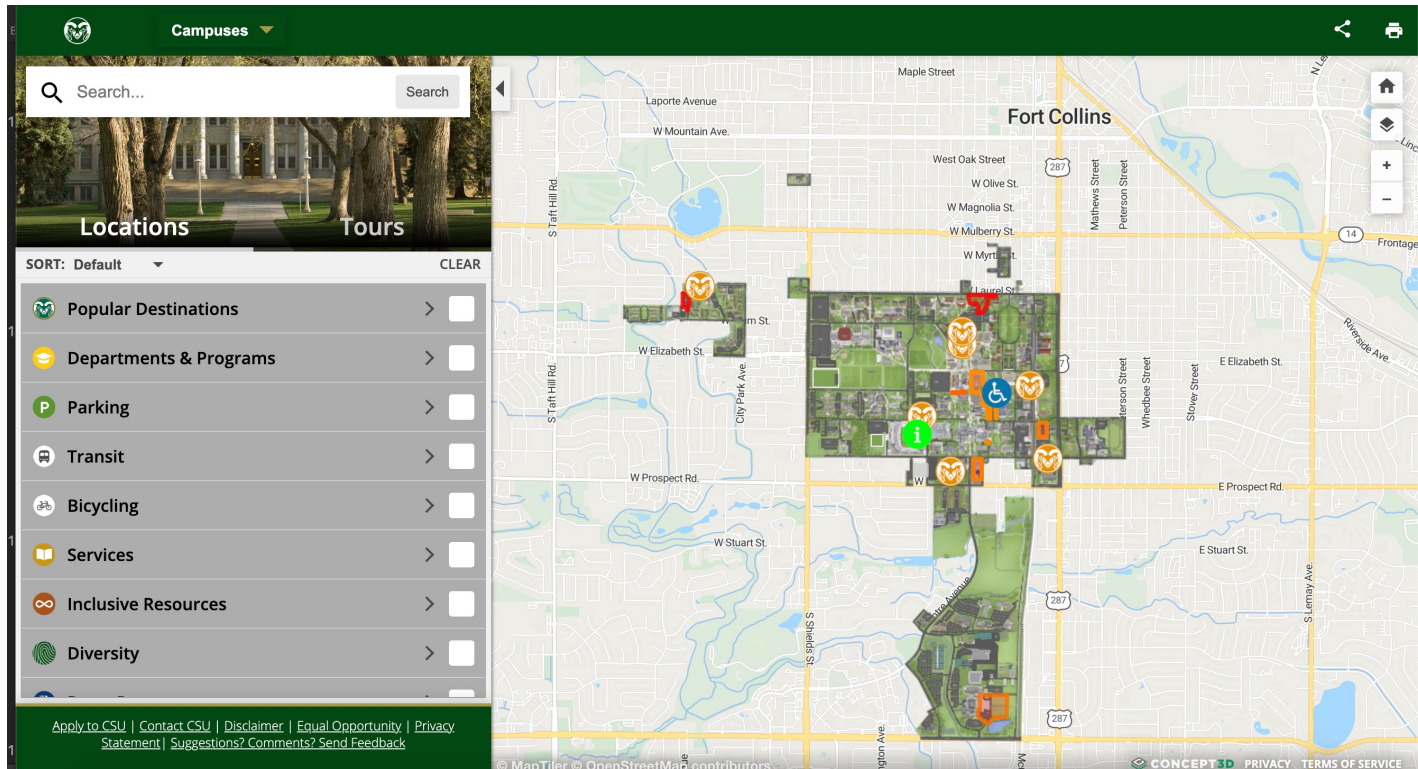
## The Five E's:

- » Engineering
- » Encouragement
- » Education
- » Evaluation & Planning
- » Equity & Accessibility

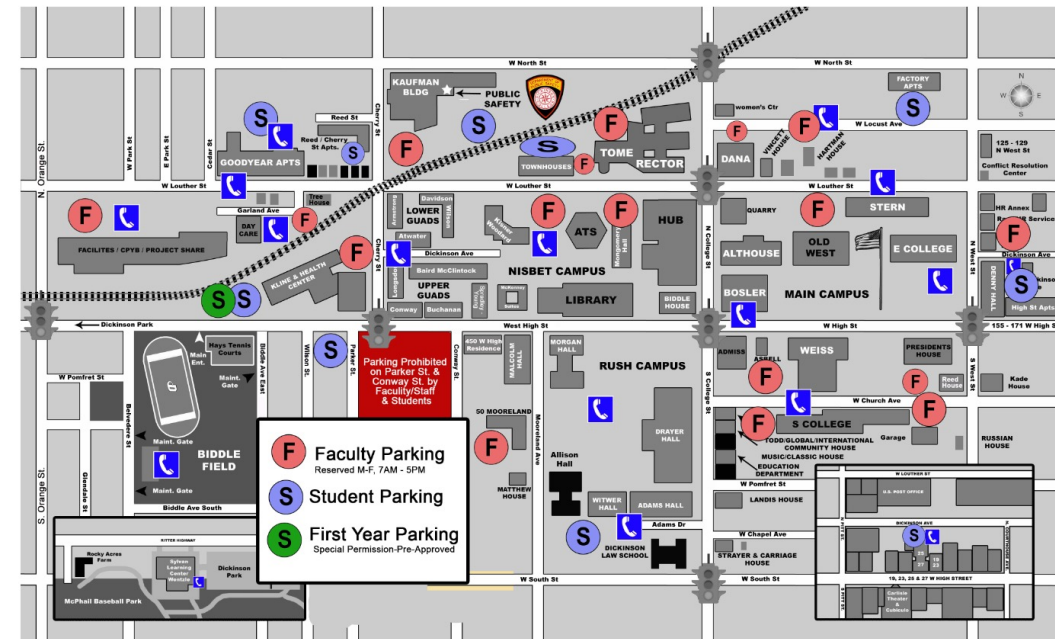




# BFU APPLICATION CRITERIA... IN CONTEXT.



# Dickinson



**COLORADO STATE UNIVERSITY**





# BIKE NETWORK

- » Bike Network Connectivity
- » Slowing speeds & traffic calming (and closing roads!)
- » Bicycle Accommodation / Complete Streets Policies
- » Maintenance of Facilities
- » Multi-modal travel



Arizona State University, Tempe



Boise State University







# BIKE PARKING

- » covered, secure
- » bike lockers
- » bike station
- » bike valet
- » APBP-compliant
- » accessible for adaptive, cargo, etc.



Portland State University



University of Iowa



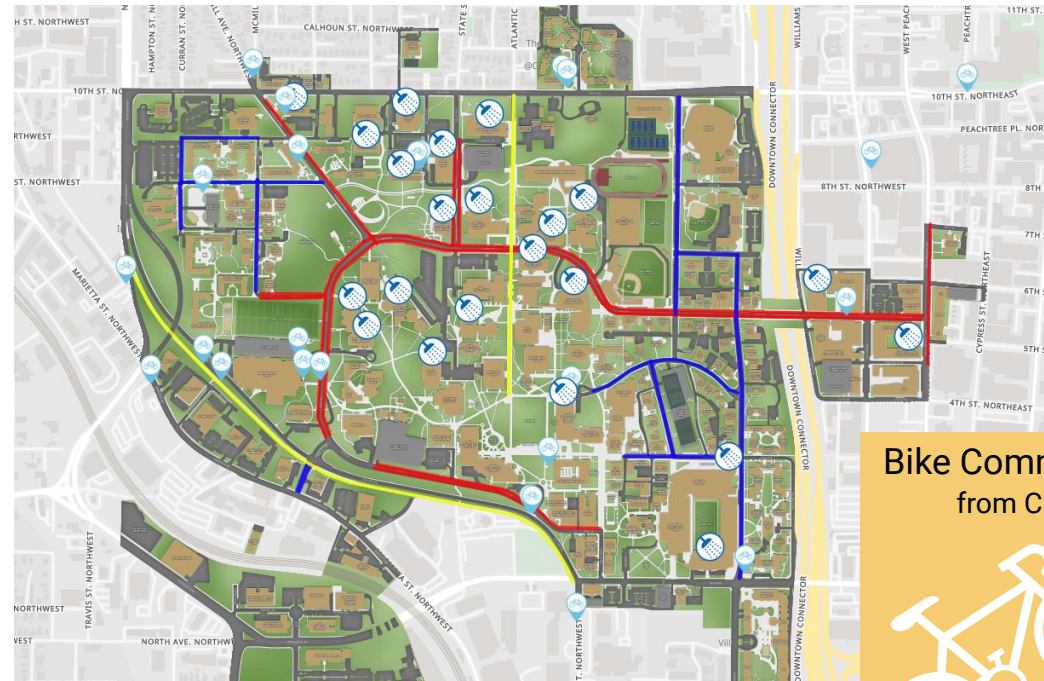
Northern Arizona University







# END-OF-TRIP FACILITIES



Georgia Tech

## Bike Commuter Shower Pass from Campus Recreation



Shower access  
7am-9am  
Monday-Friday

Starting September 3, 2019

- \$5 per month
- towel rental included
- locker rental available
- requires proof of either no parking permit or a "Smart Park" permit

visit [bike.gatech.edu/active-commuting](http://bike.gatech.edu/active-commuting)



University of Montana





# ON-CAMPUS BIKE CENTER



Naropa University  
Bike Shack



Dickinson College



University of Texas  
at Austin  
Orange Bike Project



Boise State University  
Cycle Learning Center



Boise State University  
Cycle Learning Center



Portland State University  
The Bike Hub





University of Colorado, Boulder





# MOBILE REPAIR SERVICES



University of Oregon



Washington University in St. Louis



Utah State University





# BIKE EDUCATION

ASU Arizona State University

ASU Home My ASU Colleges and Schools Map and Locations Directory SIGN IN Search

Educational Outreach and Student Services

Stories and Videos Student Services Clubs & Activities Outreach ASU Prep About Resources

## Bicycle Education Classes and Workshop

### Outdoor Cycling for Fun and Fitness: PPE 240 Spring 2016 Academic Course

Register for this Physical Activity Class to learn the basics of outdoor cycling. Spend two days a week getting fit and having fun while earning one credit hour. Open to ASU students, faculty and staff. To view course sessions, times, locations, equipment and registration instructions, download the course flyer [here](#).

### How to Bicycle to the Grocery Store

Learn how to bicycle in traffic by riding with a group to the grocery store and discover how bicycles can be used to run errands and carry cargo. Participants must bring a bicycle in working order to the class. Helmets are required and will be provided if needed. An ASU liability waiver must be signed at class to participate.

### Bicycle Commuter Class

This one hour classroom training will cover bicycle safety checks, bicycle and helmet fit, door zone and bicycle parking, as well as other topics that interest the group as time permits. No equipment necessary to attend.

### Bicycle Maintenance Class

This one hour bicycle maintenance class will cover cleaning your bicycle: drivetrain care, lubricating and wiping the chain, how to change a flat tire, as well as other topics that interest the group as time permits. No equipment necessary to attend.

### Bicycle Classroom Training

This three hour bicycle class will cover bicycle safety checks, bicycle and helmet fit, campus and community cycling resources, how to choose the right lane for your destination, lane positioning, bicycle parking and other topics that interest the group as time permits. No equipment necessary to attend.

### Traffic Skills 101

Learn how to bicycle safely and legally in traffic or on the trail. This fast-paced, ten-hour hybrid class features: bicycle safety checks, on-bike skills, crash avoidance techniques, campus and community cycling resources, 6 hours of meeting in-class and 2-4 hours of online instruction.

Participants must bring a bicycle in working order to ride. To successfully complete all the drills, participants must have a bicycle with multiple gears and a front and rear hand brake. Helmets are required and will be provided if needed. An ASU liability waiver must be signed at class to participate.

### League Certified Instructor (LCI) Seminar at ASU

Become certified through the League of American Bicyclists to teach bicycle education classes! Get paid through ASU to teach peers how to confidently and safely use a bicycle as a means of transportation. Teaching bicycle education can help create a healthier, more sustainable and socially equitable community.

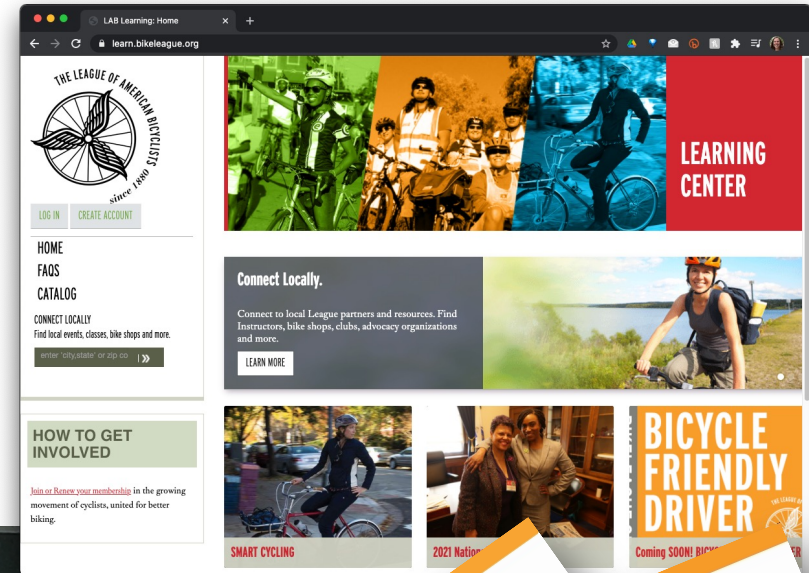
Must bring your own helmet and bicycle. The bicycle must have multiple gears and a front and rear hand brake.

#### Seminar Outline:

24 hours of in-person instruction: (must attend all three days)

Friday, 5 pm - 9 pm,

Saturday, 8 am - 7 pm,



» Smart Cycling program: [bikeleague.org/ridesmart](https://bikeleague.org/ridesmart)

» Online Learning Center: [learn.bikeleague.org/](https://learn.bikeleague.org/)





# BIKES IN ACADEMIC CURRICULUM



Participate in the nation's only collegiate Cycling Studies minor. This degree will help you prepare for a future in the contribution and promotion of cycling preservation as both a sport and a leisure pursuit.

This minor provides competitive cyclists and enthusiasts the opportunity to enhance and supplement their chosen academic program of study with their interest in cycling. Lees-McRae College is home to the 10-time National Championship USA Cycling Team and is a Silver Bicycle Friendly University through the League of American Bicyclists. With more than 60 student cyclists and faculty with deep cycling expertise, students will acquire skills and knowledge pertaining to **advocacy, design, infrastructure and cycling proficiencies.**

#### Program Aspects

- Students travel to Washington, DC to participate in the League of American Bicyclists' National Bike Summit
- Field trips include several North Carolina cycling companies, including DeFeet International, Cane Creek Cycling Components, and Industry Nine Componentry
- Guest lectures have included notable cycling icons such as Greg LeMond, three-time winner of the Tour de France. Courses
- CYC 131 Principles of Cycling (3 hours)
- CYC 233 Cycling Infrastructure and Course Design (3 hours)
- CYC 335 Applications of Cycling Infrastructure (3 hours)
- CYC 445 Bicycling Business (3 hours)
- CYC 471 Cycling Internship (3 hours)
- ORM 235 Mountain Biking (2 hours)
- ORM 310 League of American Bicyclists Smart Cycling Certification (1 hour)

#### Career Opportunities

- Bicycle Marketing & Sales
- Public & Private Cycling Entities
- Bicycling Gear and Equipment Production and Design
- Bicycle Racing, Training, and Event Management
- Recreation Management
- Retail Management

#### Contact

**Ted Silver, BSPH, JD**  
Program Coordinator,  
Cycling Studies Minor  
silvert@lmc.edu

PURSUE YOUR PASSION

LMC.EDU/ACADEMICS



University of Colorado Colorado Springs





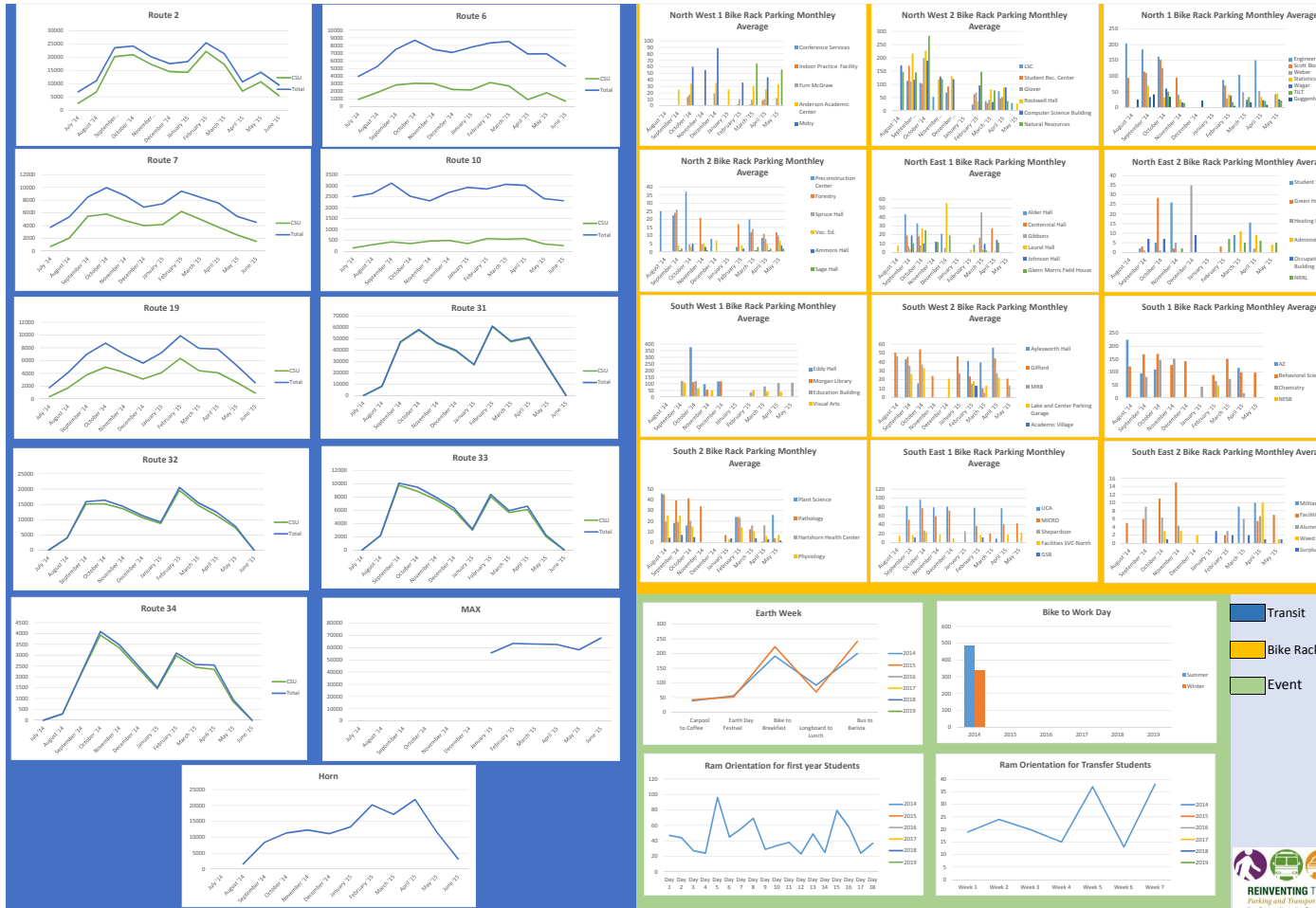
# BIKE AMBASSADORS







# RESEARCH & DATA!



Colorado State University

2019

## SPARTANS SOCIOMOBILITY CENTENNIAL SURVEY



School of Planning, Design and Construction  
MICHIGAN STATE UNIVERSITY

Human Ecology Building | 552 W. Circle Drive, Room 101, East Lansing, MI 48824

Michigan State University

- Transit
- Bike Rack Parking
- Event



### COMMUTE AND ON-CAMPUS TRIPS



Most Spartans chose to drive alone for their commute trips and walk for their on-campus trips. Students living on campus chose to walk and take CATA bus around campus.

The responses of this section are from Spartans (faculty, staff, students) living off campus. (Select up to two)		How do you typically get around campus? (Select up to two)	
CATA bus	5.9%	CATA bus	22.0%
Driving alone	66.9%	Walking	57.4%
Carpooling	6.9%	Electric scooter	0.3%
Motorcycle/motorized bike or moped	1.2%	Wheelchair	0.3%
Uber or Lyft	0.3%	Spec-Trans	0.3%
Taxi	0.1%	Other	1.3%
Zipcar	0.1%		
Walking	7.9%		
Biking	6.6%		
Skateboard or roller blades	0.1%		

The responses of this section are from students living on campus. (N = 2422)		How do you typically get around campus? (Select up to two) (N = 2440)	
CATA bus	36.1%	CATA bus	22.0%
Driving alone	3.5%	Walking	53.3%
Carpooling	0.9%	Electric scooter	0.4%
Motorcycle/motorized bike or moped	2.1%	Wheelchair	0.7%
Uber or Lyft	1.3%	Spec-Trans	0.3%
Taxi	0.1%	Other	0.2%
Zipcar	0.1%		
Walking	44.2%		
Biking	10.6%		
Skateboard or roller blades	0.3%		
Electric scooter	0.3%		
Wheelchair	0.3%		
Spec-Trans	0.3%		
Other	0.6%		



# EQUITY & ACCESSIBILITY

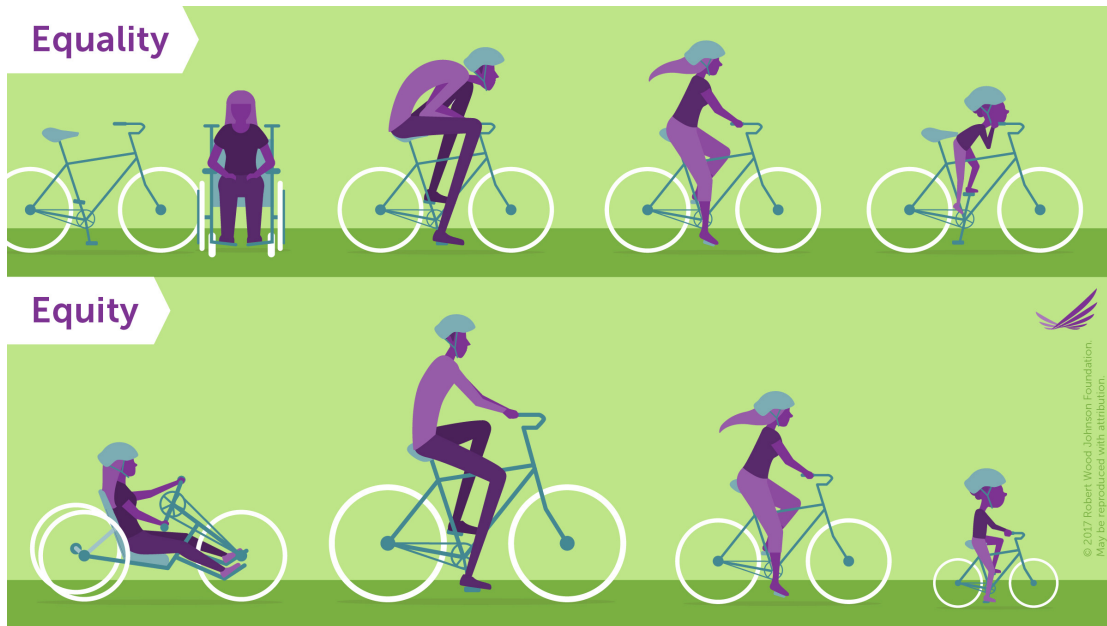


Image credit: Robert Wood Johnson Foundation



Image credit: esri

**Reminder: Not every disability is visible to others, and not everyone with an accessibility need identifies as “disabled”.**



# EQUITY & ACCESSIBILITY



SUBSCRIBE

DONATE



Search



About ▾

Our Blog ▾

Our Videos ▾

COVID-19

## Disabled People Ride Bikes (and Trikes, and Tandems and Recumbents)!

Created for NACTO's *Bike Share and Cities for Cycling Roundtable*.

[Transcript](#)

[Learn More](#)














<https://rootedinrights.org/video/disabled-bikers/>

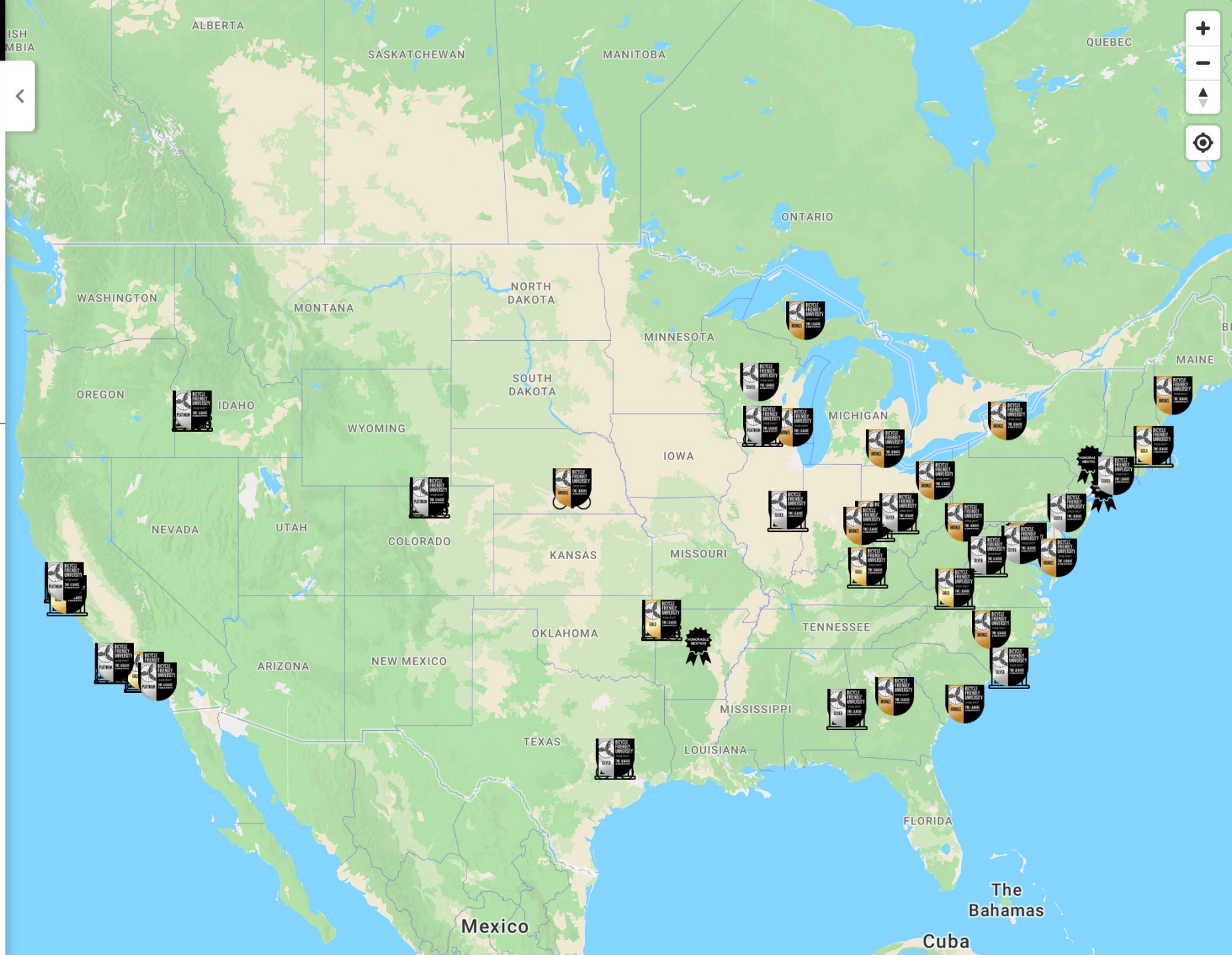




# Bicycle Friendly University 2023 Highlights

Highlights from 2023 Bicycle Friendly University Applications

	Platinum BFUs 2023	6
	Gold BFUs 2023	6
	Silver BFUs 2023	10
	Bronze BFUs 2023	17
	Honorable Mention BFUs 2023	3
	Campus Bike Program Websites	25
	Campus Bike Shops	18
	Education & Encouragement Prog...	13
	Policies & Plans	8
	Smaller Schools (<10,000 students)	14
	Community Colleges	4

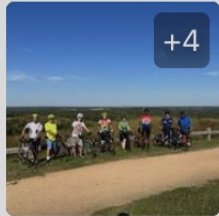




**Salisbury University**  
1101 Camden Ave, Salisbury, MD  
Student Enrollment: 8,016



**Wake Tech Scott Northern Wake C**  
9101 Fayetteville Rd, Raleigh, NC  
Student Enrollment: 7,318

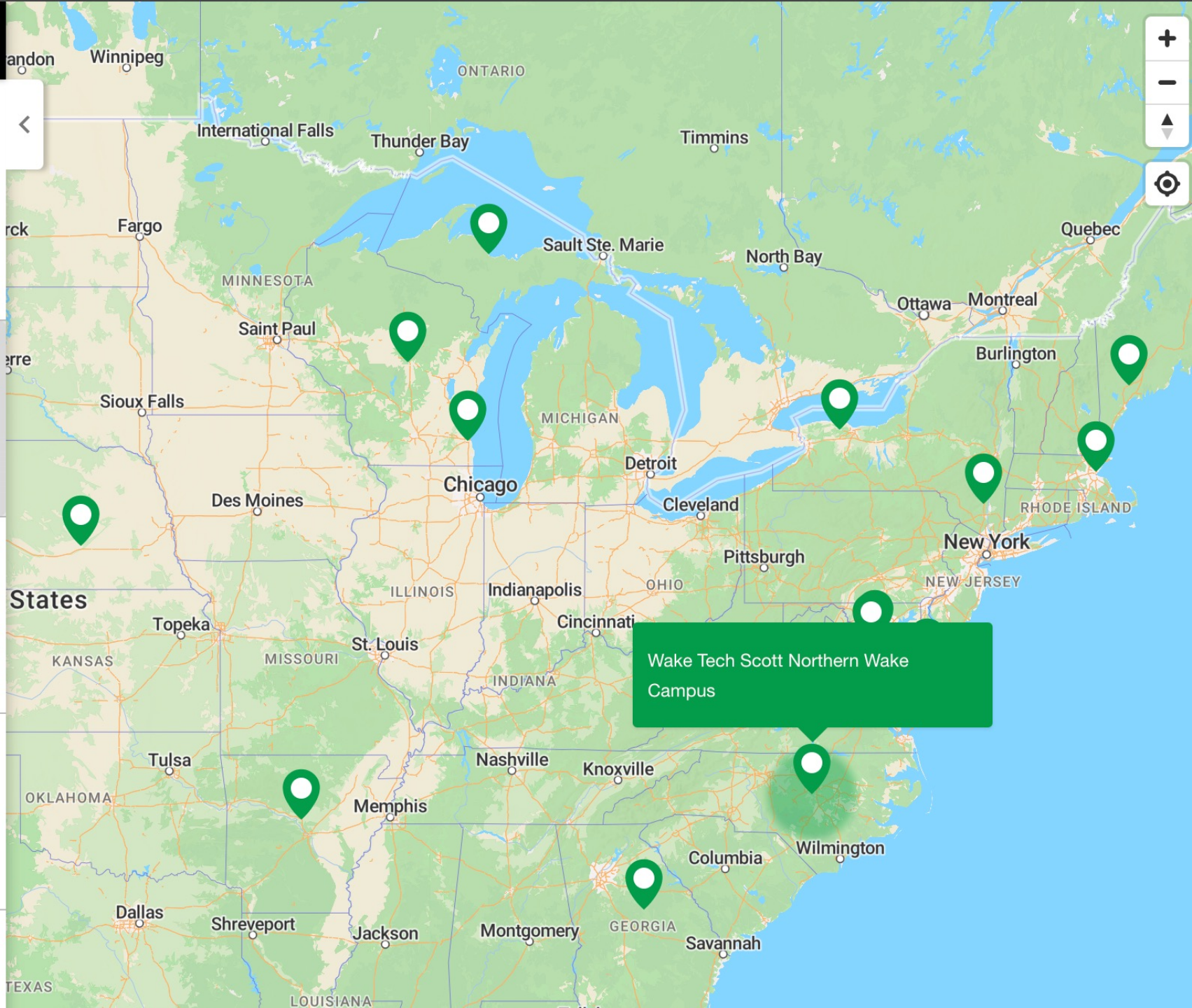
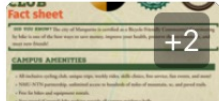


**UW-Stevens Point**  
1209 Fremont St, Stevens Point, WI  
Student Enrollment: 7,313



**SUNY New Paltz**  
1 Hawk Drive, New Paltz, NY  
**Honorable Mention**

**Northern Michigan University**







# READY TO APPLY?

## » **Next Annual BFU Deadline:**

» August 8, 2024

» **\$100 Application Fee**

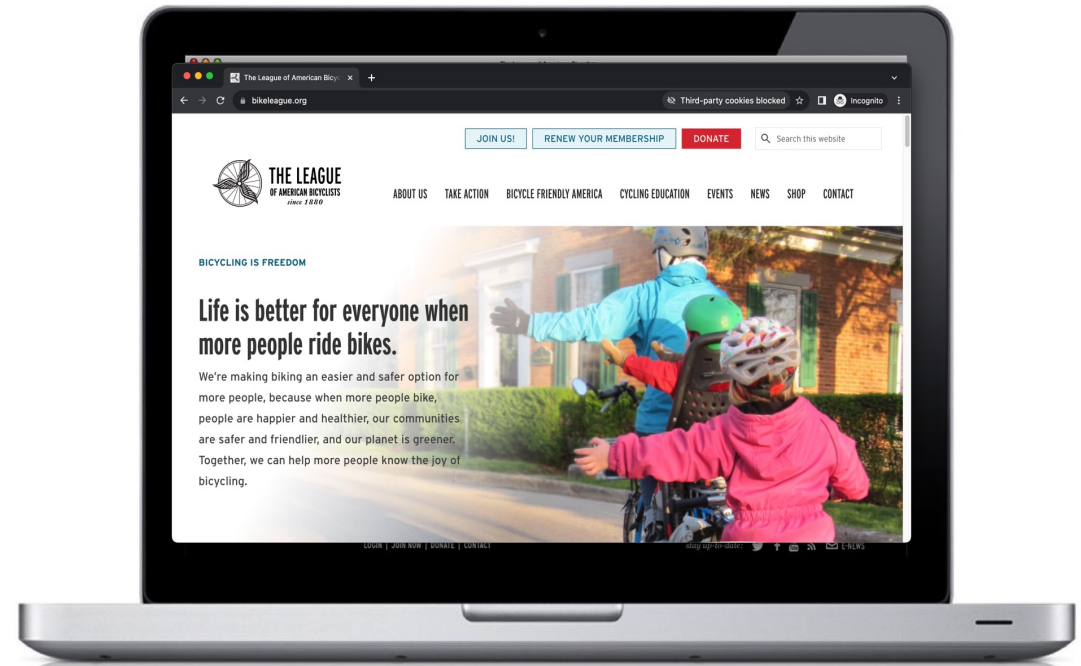
» **Discounts for HBCUs, MSIs, Women's Colleges,  
and Community Colleges**

» **FREE for League Affiliate members!**

» Learn more: [bikeleague.org/university](https://bikeleague.org/university)

» ***2025 Application to open in October!***

» *Annual submission deadline always in early August*



» **Online Application:**  
[apply.bikeleague.org](https://apply.bikeleague.org)





# GETTING STARTED...

**THE LEAGUE OF AMERICAN BICYCLISTS**  
since 1880

# BICYCLE FRIENDLY AMERICA

Bicycle Friendly Community » Bicycle Friendly Business » Bicycle Friendly University

MY ACCOUNT HOME BICYCLE FRIENDLY COMMUNITY BICYCLE FRIENDLY BUSINESS BICYCLE FRIENDLY UNIVERSITY FAQS

Login to Complete a Form or to Access Judging Panel

**Email Address \***

**Password \***

remember me [lost password?](#)

I'm not a robot

reCAPTCHA  
Privacy - Terms

Login

## Welcome to the Bicycle Friendly America Application Portal!

The League of American Bicyclists' **Bicycle Friendly America**<sup>SM</sup> (BFA<sup>SM</sup>) program provides a roadmap, hands-on assistance and recognition for states, communities, universities and businesses. The BFA program is a tool for states, communities, businesses, and universities to make bicycling a real transportation and recreation option for all people.

### BICYCLE FRIENDLY BUSINESS

- [Apply for Bicycle Friendly Business \(BFB\) status!](#)
  - Next BFB deadline: **June 5, 2024** 11:59pm PT
  - [Preview the BFB Application \(.pdf\)](#)
  - **Renewing BFB?** [Duplicate your previous submission into the Summer 2024 submission form here.](#) [Learn more.](#)

### BICYCLE FRIENDLY COMMUNITY

- [Apply for Bicycle Friendly Community \(BFC\) status!](#)
  - Next BFC deadline: **June 25, 2024** at 11:59pm PT
  - **NOTE: Starting in 2024, there will only be one BFC submission deadline per year.** [Learn more about this schedule change here.](#)
  - [Preview the updated 2024 BFC Application \(.docx\)](#) - updated 9/25/23
  - **Renewing BFC?** [Duplicate your previous submission into the 2024 submission form here.](#) [Learn more.](#)

### BICYCLE FRIENDLY UNIVERSITY

- [Apply for Bicycle Friendly University \(BFU\) status!](#)
  - Next BFU deadline: **August 8, 2024** at 11:59pm PT
  - [Preview the 2024 BFU Application \(.pdf\)](#)
  - **Renewing BFU?** [Duplicate your previous submission into the 2024 submission form here.](#) [Learn more.](#)

**Renewing BFA Applicants:**

[If you last applied to the Bicycle Friendly America program](#)

» **Online Application:**  
[apply.bikeleague.org](https://apply.bikeleague.org)

» **Next BFU Deadline:**

- » Aug. 8, 2024
- » \$100 Application Fee
  - » Discounts for HBCUs, MSIs, Women's Colleges, and Community Colleges

» [bikeleague.org/university](https://bikeleague.org/university)



# BFU APPLICATION PREVIEW (PDF)



## Bicycle Friendly University 2024 APPLICATION PREVIEW

Updated October 26, 2023

### TO APPLY

Bicycle Friendly University (BFU) Applications are only accepted through the online application portal. **THIS DOCUMENT IS A PREVIEW ONLY.**

To submit the online BFU application, please create an account at <https://apply.bikeleague.org>

Access additional resources at <https://bikeleague.org/university>

Email questions regarding the BFU application or program to [bfa@bikeleague.org](mailto:bfa@bikeleague.org)

**2024 Application Deadline: August 8, 2024**

**Please Note:** There is a \$100 application fee to apply for the Bicycle Friendly University designation. Discounts are available. Learn more at: <http://bit.ly/BFUFee>

### APPLICATION TIPS

**NOTE:** Questions highlighted in blue are dependent fields that do not appear in the online application until their corresponding answer option above is selected. **If these questions are not applicable to your campus, skip ahead to the next question.**

- To provide continuity for returning applicants, all recent changes (new since the 2023 BFU round) are **highlighted in yellow** throughout the application preview below.
- Please review the entire application before you begin to complete the online form, particularly the open text fields, so that you are familiar with all the topics that will be covered in later question/answer options.
- The Bicycle Friendly University online application now allows multiple user accounts to collaborate on a single application! To add a collaborator, click on "Manage Collaborators" in

» **Download the PDF Application:**  
[apply.bikeleague.org](https://apply.bikeleague.org)

» **Next BFU Deadline:**

» Aug. 8, 2024

» \$100 Application Fee

» Discounts for HBCUs, MSIs, Women's Colleges, and Community Colleges

» [bikeleague.org/university](https://bikeleague.org/university)



# BFU APPLICATION PREVIEW (PDF)



## 2024 Bicycle Friendly University Application Preview League of American Bicyclists

All applications must be submitted through the **online form** at <https://apply.bikeleague.org> by **11:59pm PT on August 8, 2024**

For more information about the BFU program, please visit <https://bikeleague.org/university>.

Campus Population .....	9
<i>Engineering</i> .....	10
Campus Roadway & On-Road Bicycle Network .....	10
Campus Off-Road Bicycle Network .....	12
Other Bicycle-Related Facilities .....	13
Engineering Policies and Design Standards .....	14
End-of-Trip Facilities for Bicyclists .....	17
Bicycle Parking and Storage .....	18
Multi-Modal Transportation Accommodations .....	20
Equity and Accessibility in Engineering.....	21
Engineering Bonus Points .....	22
<i>Education</i> .....	22
Awareness Campaigns & Information Sharing.....	22
Classes & Training .....	23
Equity and Accessibility in Education.....	28
Education Bonus Points .....	28
<i>Encouragement</i> .....	29
Bicycle Culture, Support, and Promotion .....	29
Bike Share .....	31
Access to Bicycle Equipment and Repair Services .....	33
Route-Finding Support.....	35
Equity and Accessibility in Encouragement.....	36
Encouragement Bonus Points .....	36
<i>Evaluation &amp; Planning</i> .....	37
Staffing and Committees .....	37

» **Download the PDF Application:**  
[apply.bikeleague.org](https://apply.bikeleague.org)

» **Next BFU Deadline:**

» Aug. 8, 2024

» \$100 Application Fee

» Discounts for HBCUs, MSIs, Women’s Colleges, and Community Colleges

» [bikeleague.org/university](https://bikeleague.org/university)



# BFU APPLICATION PREVIEW (PDF)



## 2024 Bicycle Friendly University Application Preview

League of American Bicyclists

All applications must be submitted through the **online form** at <https://apply.bikeleague.org> by **11:59pm PT on August 8, 2024**

For more information about the BFU program, please visit <https://bikeleague.org/university>.

---

**B7g. If there are any other off-road dedicated bike facilities not already covered in questions B7a-f, please describe those facilities and provide their total mileage here.**

---

**B8. In what ways have you reduced conflicts between bicyclists and pedestrians on off-road pathways and sidewalks? Check all that apply. \***

Select one or more options

- Parallel but separated paths for bicyclists and pedestrians
- Signage or markings on shared use paths
- Dismount zones
- Dismount regulations during high-traffic periods
- Education/awareness campaign about sharing paths
- Other\*<sup>B8a</sup>
- N/A – No off-road pathways or sidewalks where cycling is permitted
- None of the above

**\*B8a. If other, please describe \***

---

## Other Bicycle-Related Facilities

---

**B9. Which of these bicycling areas, facilities, or amenities do you have at your college/university? Check all that apply. \***

Select one or more options

- BMX track
- Velodrome
- Indoor cyclist training facility
- Cyclocross course
- Mountain-bike park



---

**B17. Does your college/university have any of the following policies to ensure there are end-of-trip facilities for bicyclists? Check all that apply. \***

Select one or more options

- Minimum bike parking requirements for existing buildings
- Minimum bike parking requirements for all new buildings
- Minimum bike parking requirements for parking garages
- Officially adopted Bike Parking Design Standards or Guidelines\*<sup>B17a-b</sup>
- Policy requiring showers in non-residential buildings
- Policy requiring lockers in non-residential buildings
- Bicycles are permitted in most campus buildings
- Policy that allows bike parking to substitute for car parking in new developments
- No minimum car parking requirements for new buildings or developments
- Requirement for new developments to meet LEED silver standards or higher
- None

---

**\*B17a. Do your standards for bicycle parking meet any of the following criteria? Check all that apply. \***

Select one or more options

- Conform with APBP Bike Parking Guidelines ([www.apbp.org/bicycle-parking-solutions](http://www.apbp.org/bicycle-parking-solutions))
- Address the need for accommodating adaptive cycles (e.g. hand bikes, tricycles, recumbents, etc.) and cargo bikes
- Address the need for facilities to recharge electric assist bicycles
- None of the above

---

**\*B17b. Please link or upload a PDF of your Campus Bicycle Parking Standards or Guidelines**

---



# APPLICATION PORTAL FAQs



## Application Portal FAQs:

- Logging In
- Collaborators
- Application Process
- Awards
- Renewals
- Payments

Online Application: <https://apply.bikeleague.org>





# READY TO APPLY?

## » **Next Annual BFU Deadline:**

» August 8, 2024

» \$100 Application Fee

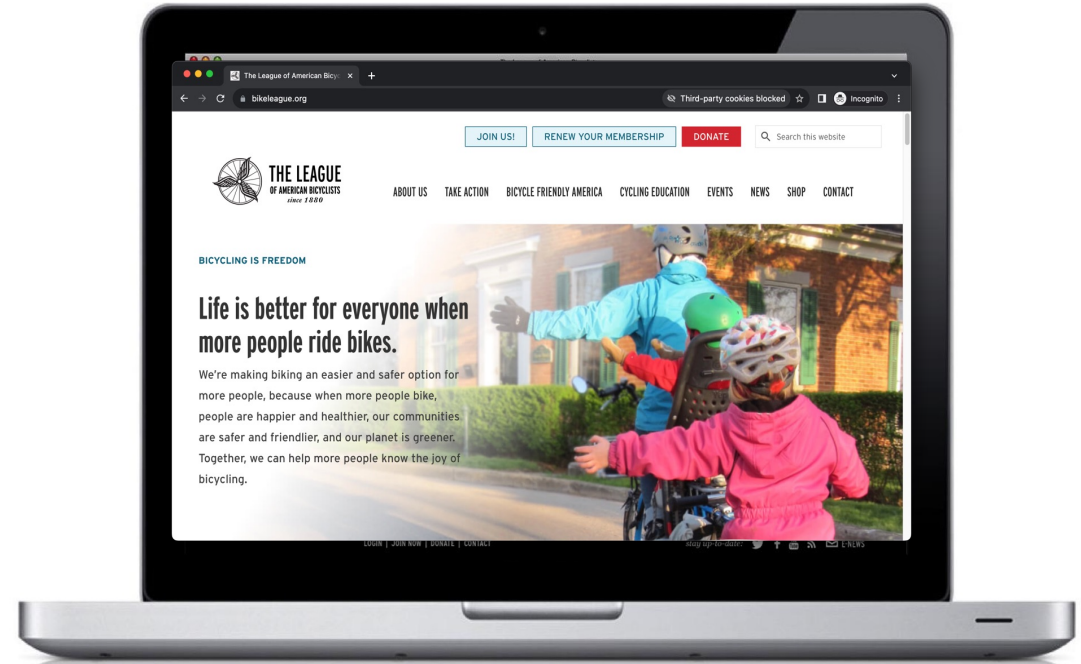
» **Discounts for HBCUs, MSIs, Women's Colleges,  
and Community Colleges**

» **FREE for League Affiliate members!**

» Learn more: [bikeleague.org/university](https://bikeleague.org/university)

» ***2025 Application to open in October!***

» *Annual submission deadline always in early August*



» **Online Application:**  
[apply.bikeleague.org](https://apply.bikeleague.org)





Questions?

[www.bikeleague.org/bfa](http://www.bikeleague.org/bfa)  
[bfa@bikeleague.org](mailto:bfa@bikeleague.org)



# BFU 101: Colorado State University

---

June 4, 2024

Presented by Erika Benti, CSU Parking and Transportation Services



Colorado State University



# Colorado State University

- Fort Collins, CO
- 32,239 students
- 9,794 employees






# Origin of the “Safety Task Force”

NEWS > CRIME AND PUBLIC SAFETY > CRASHES AND DISASTERS

## A CSU student was struck by a car on campus Monday

Monday marked the first day of classes on the Fort Collins campus

[f](#) [g+](#) [t](#)



The Colorado State University campus.

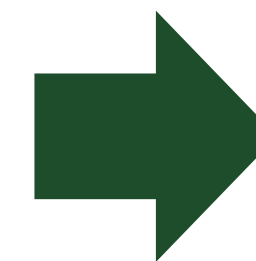
By **SAM TABACHNIK** | [stabachnik@denverpost.com](mailto:stabachnik@denverpost.com) | The Denver Post  
PUBLISHED: August 28, 2019 at 11:48 a.m. | UPDATED: August 28, 2019 at 5:49 p.m.

A 19-year-old freshman at Colorado State University was struck by a car Monday while walking on campus during his first day of classes, school officials said.

Anthony “TJ” Avery was hit by a car being driven by a 32-year-old woman at 6:15 p.m. at the intersection of West Piktin Street and Ellis Drive on the school’s campus, Dell Rae Ciaravola, spokeswoman for CSU police, said.

The driver, who is also a CSU student, stayed on the scene after the accident, Ciaravola said.

Avery was transported to the Medical Center of the Rockies with serious injuries.



## *Recommendations to Enhance Transportation Safety on Campus, June 2020*

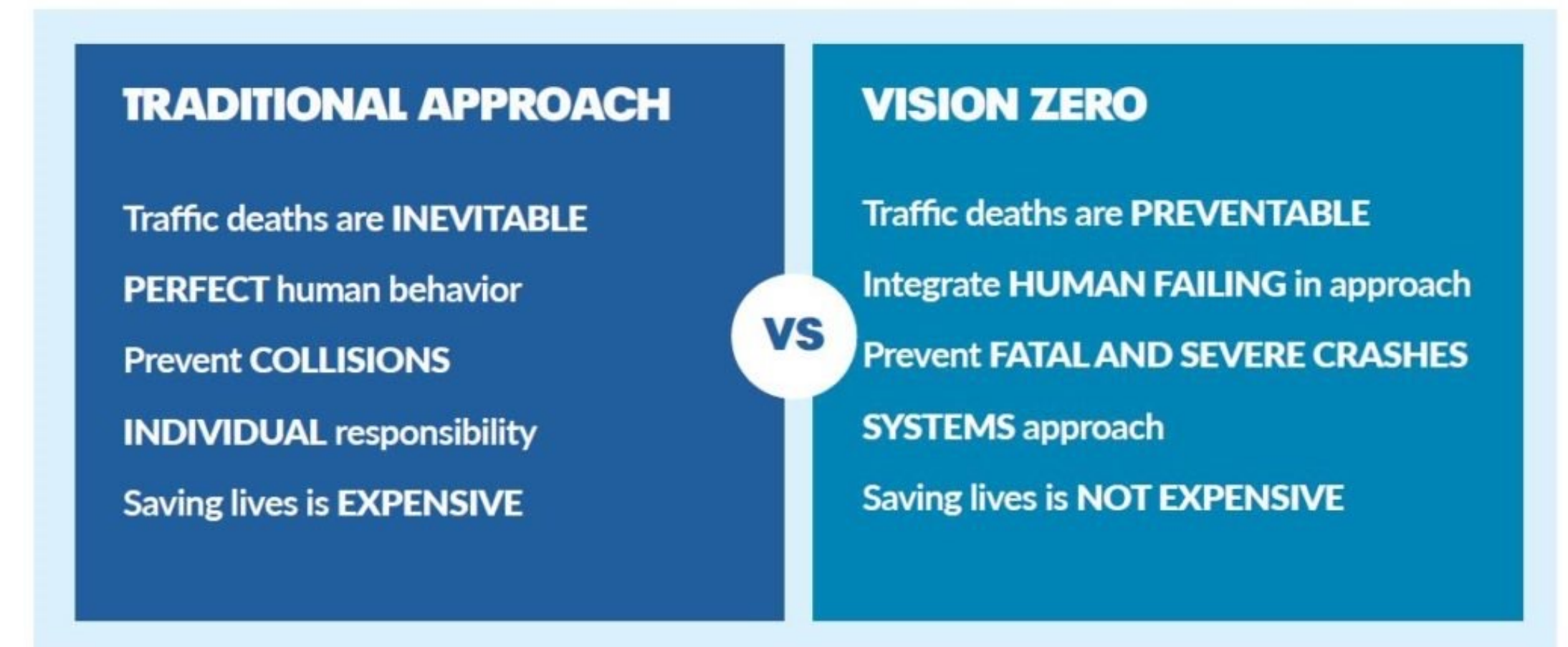
- Enforcement
- Infrastructure
- Policy and Standards
- Education



# Evolution to Vision Zero

According to the Vision Zero Network, Vision Zero is:

- A strategy to **eliminate traffic fatalities and severe injuries** among all road users, and to ensure safe, healthy, equitable mobility for all.\*
- International movement first implemented in Sweden in the 1990s, now gaining momentum in American cities.
- Commitment to Vision Zero requires:
  - Leadership, collaboration and accountability
  - Data collection and analysis
  - Prioritizing equity and community engagement
  - Managing speed to safe levels
  - Setting a timeline to achieve zero traffic deaths and serious injuries







Engineering



Press Esc to exit full screen

# CSU Complete Streets Guidelines

November, 2022 // Preliminary Draft

Markup summary of all received comments: 5/31/23



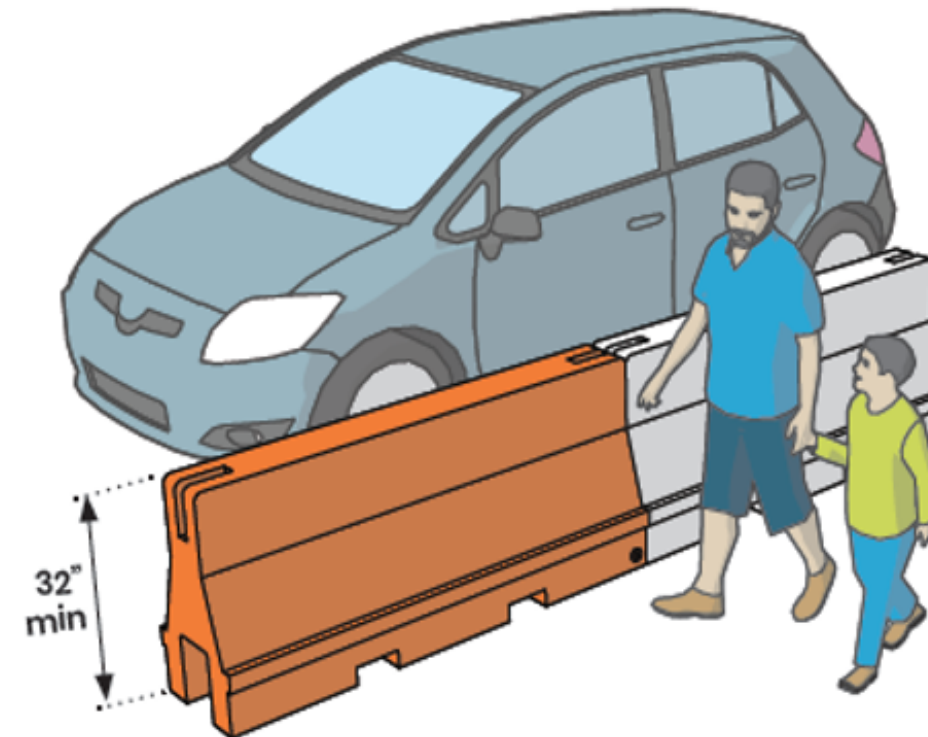
## Channelizing Devices

Channelizing devices delineate a desired path, mark specific hazards, separate opposing traffic flows, and are used to close a roadway partially or totally. This section includes guidance for the placement and use of channelizing devices between pedestrians and motor vehicle traffic, pedestrians and the work zone, bike users and motor vehicle traffic, and bike users and the work zone. Generally, when channelizing devices conflict with pavement markings, space the devices at no more than  $\frac{1}{2} S$  feet, where  $S$  is the speed in mph. For example, if it is necessary to create a temporary center line on a 30mph street that is not consistent with the pavement markings, reduce the spacing between channelizing devices to 15 feet. Channelizing device spacing may also be reduced for night work, when shifting traffic, or when it is otherwise desirable to create a more conspicuous path for drivers to follow.

### Pedestrian Channelizing Devices

Channelizing devices are used to define temporary walkways and to separate pedestrians from either construction activities or traffic. If the temporary walkway is created using roadway or

**Figure 10. An example of a crashworthy channelizing device that can be used to delineate a pedestrian or bicycle path**



**Figure 11. Traffic cones should not be used as pedestrian channelizing devices because they do not provide a continuous detectable edge**



# Complete Streets and Construction Detour Guidelines





## New Infrastructure: Bike/Ped Roundabout

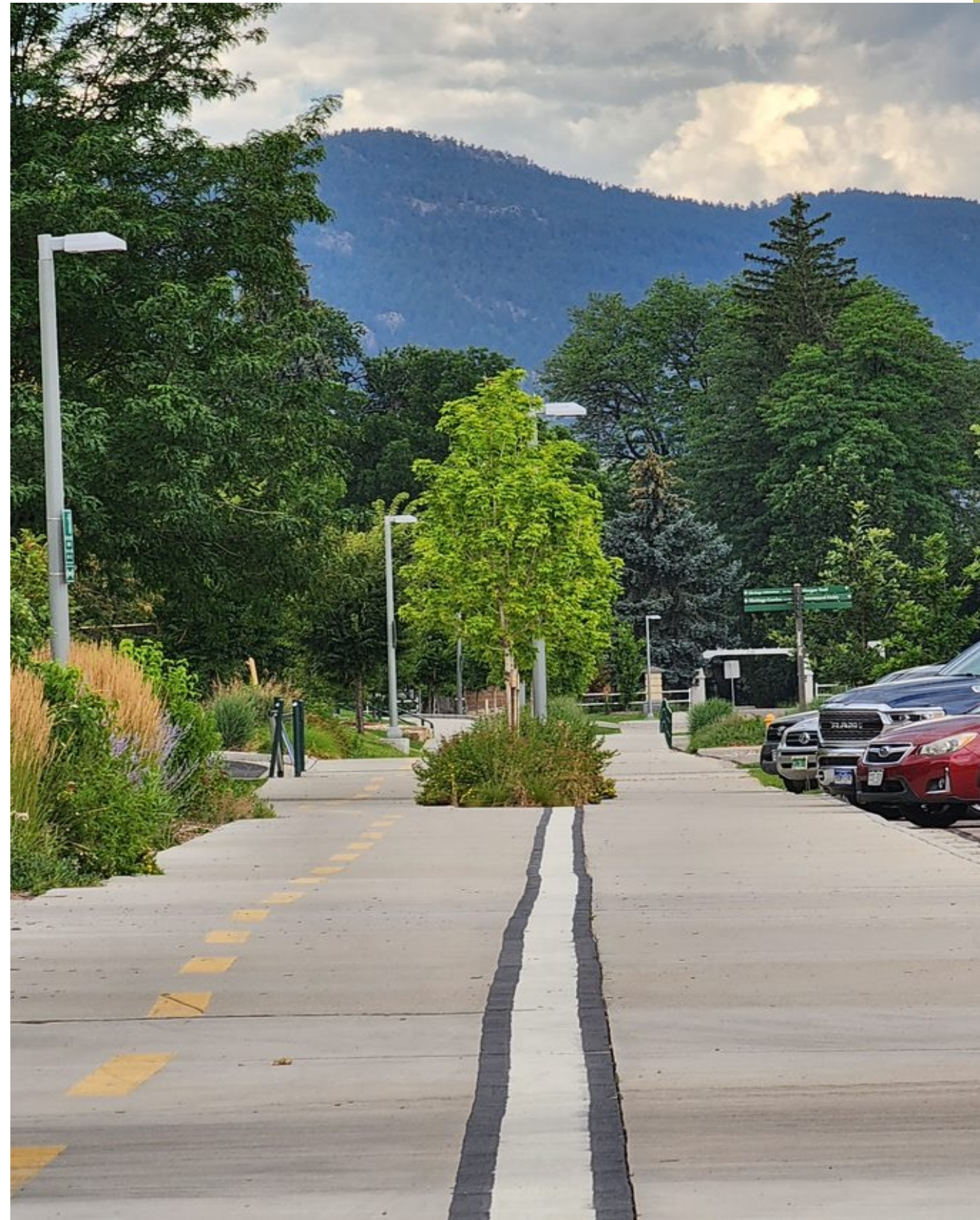








New Infrastructure:  
More separated trails







## New Infrastructure: Signage at Bike Parking







Spin e-bike and e-scooter share





## Spin Adaptive Program





# Education





Move-In Bike Tours





## The Spoke and The Mobile Spoke





Get Back on the Bike  
(Employees)





## Community Rides (Employees)





Encouragement



# REGISTER YOUR BIKE

with CSU Police to receive a **Free U-Lock** while supplies last.

This is a special program funded by your fellow students at the Alternative Transportation Fee Advisory Board and the Associated Students of CSU, to help protect your property and keep your bike rolling all year long.



For more information about the program and how to help prevent bike theft.

[police.colostate.edu](http://police.colostate.edu)

To best serve our students, we ask everyone to register their bicycles. Registering your bicycle helps deter theft, increases the chance of your bicycle being recovered if stolen, and provides contact information in case your bicycle needs to be relocated due to construction. Registering your bicycle offers students the opportunity to receive a free u-lock.

[police.colostate.edu/register-your-bike](http://police.colostate.edu/register-your-bike)



**ATFAB**  
AT COLORADO STATE UNIVERSITY



Free u-locks for students






## E-bikes for Essential Workers





**Free Bicycle Education Classes  
September 2022**

- Learn to Ride (Bike or Skateboard)
  - Smart Cycling
  - Bicycling 101 & 102
  - Bicycle Friendly Driver



We Ride







#RamsRideRight





# Evaluation & Planning





# Transportation Demand Management Master Plan

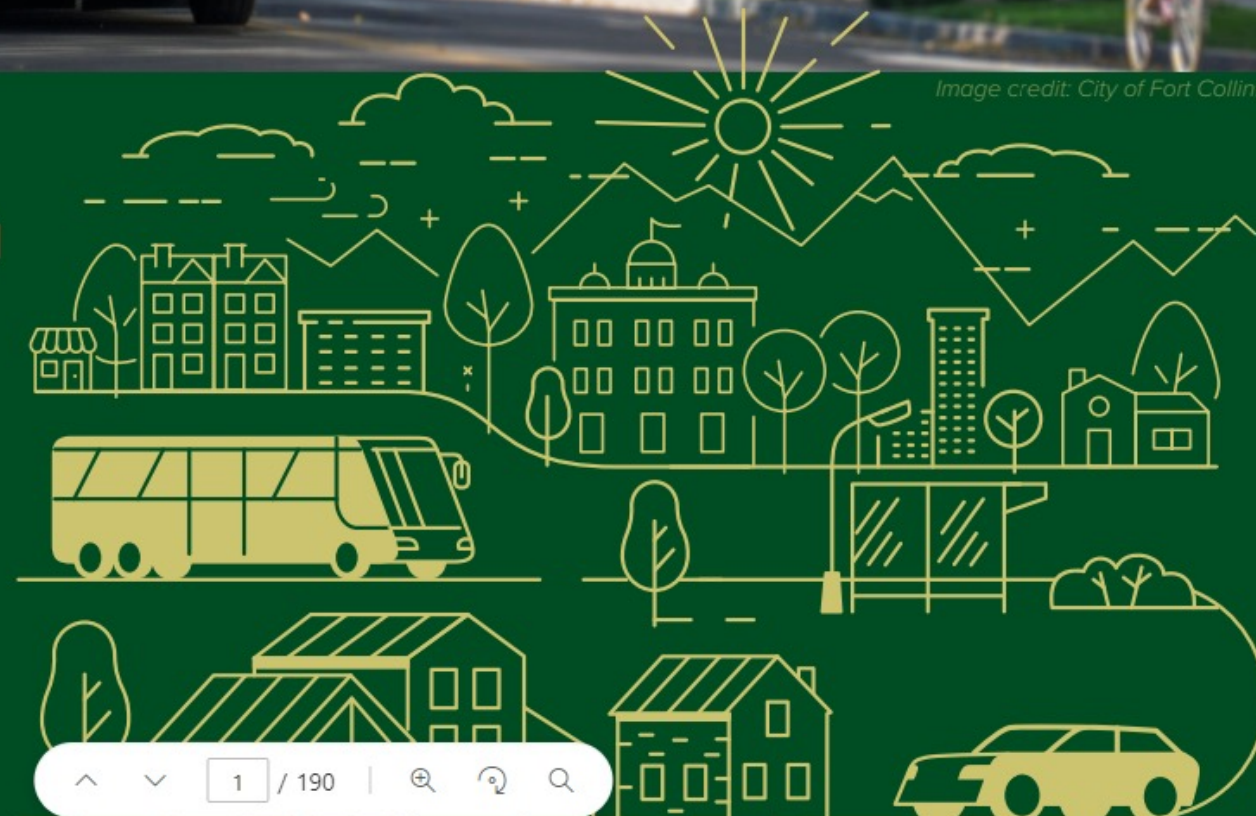


**TRANSPORTATION DEMAND  
MANAGEMENT MASTER PLAN**  
2023

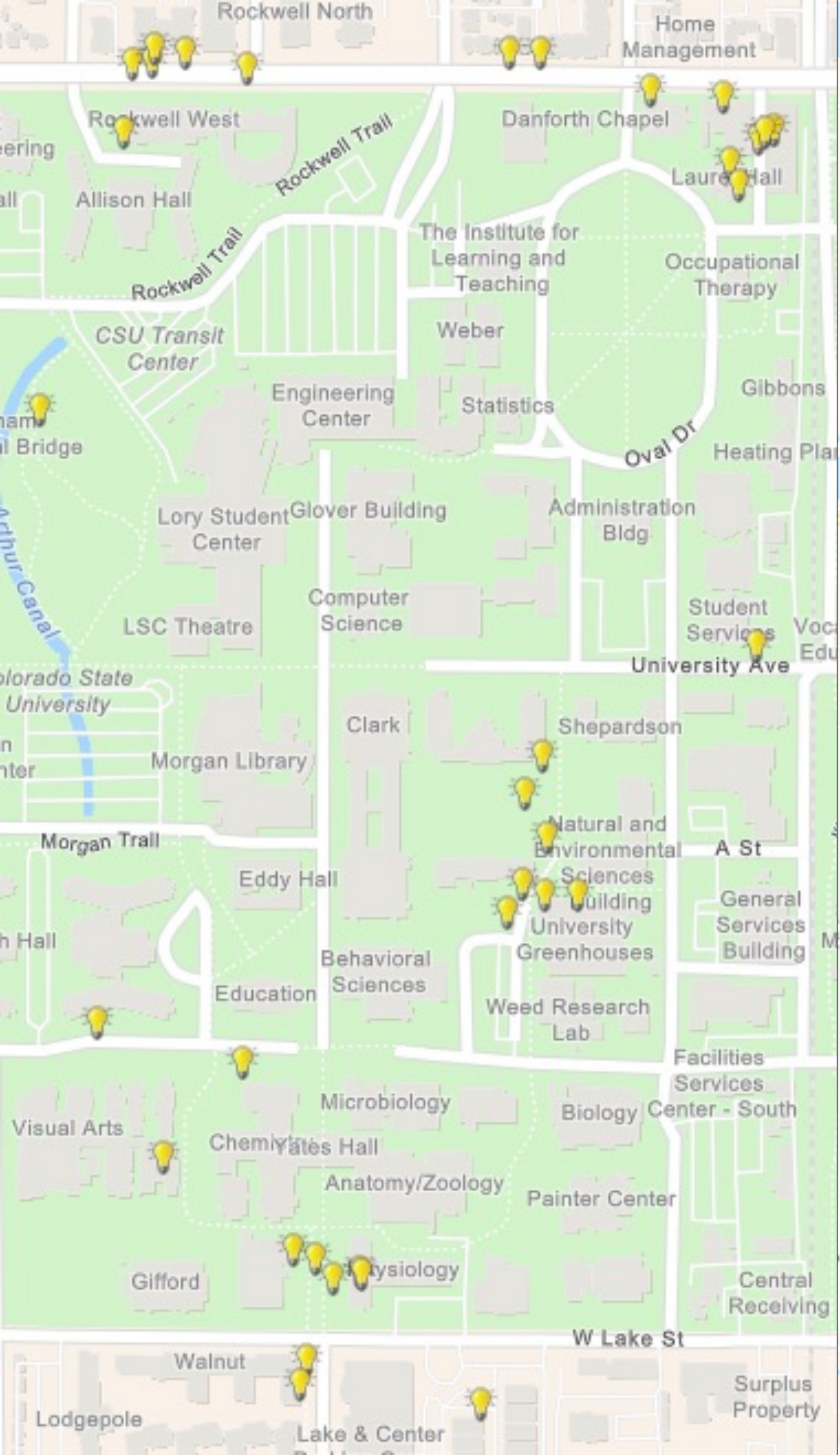


**COLORADO STATE  
UNIVERSITY**

September 2023







### Location

Click the map to draw the location.

### Details

Date

Observed Concern

Any Details regarding this concern? (optional)

Would you like to be contacted regarding this report?

First Name (optional)

Last Name (optional)

Email (optional)

Phone Number (optional)

### Attachments



# Reporter Tool





## Colorado State University Vision Zero Initiative

Injury Crash Reports 21/22 to 22/23 Academic Years



Overview

Official Report Breakdown

### Explore

#### Severity

- Select all
- Minor
- Severe
- Fatal

#### Report Type

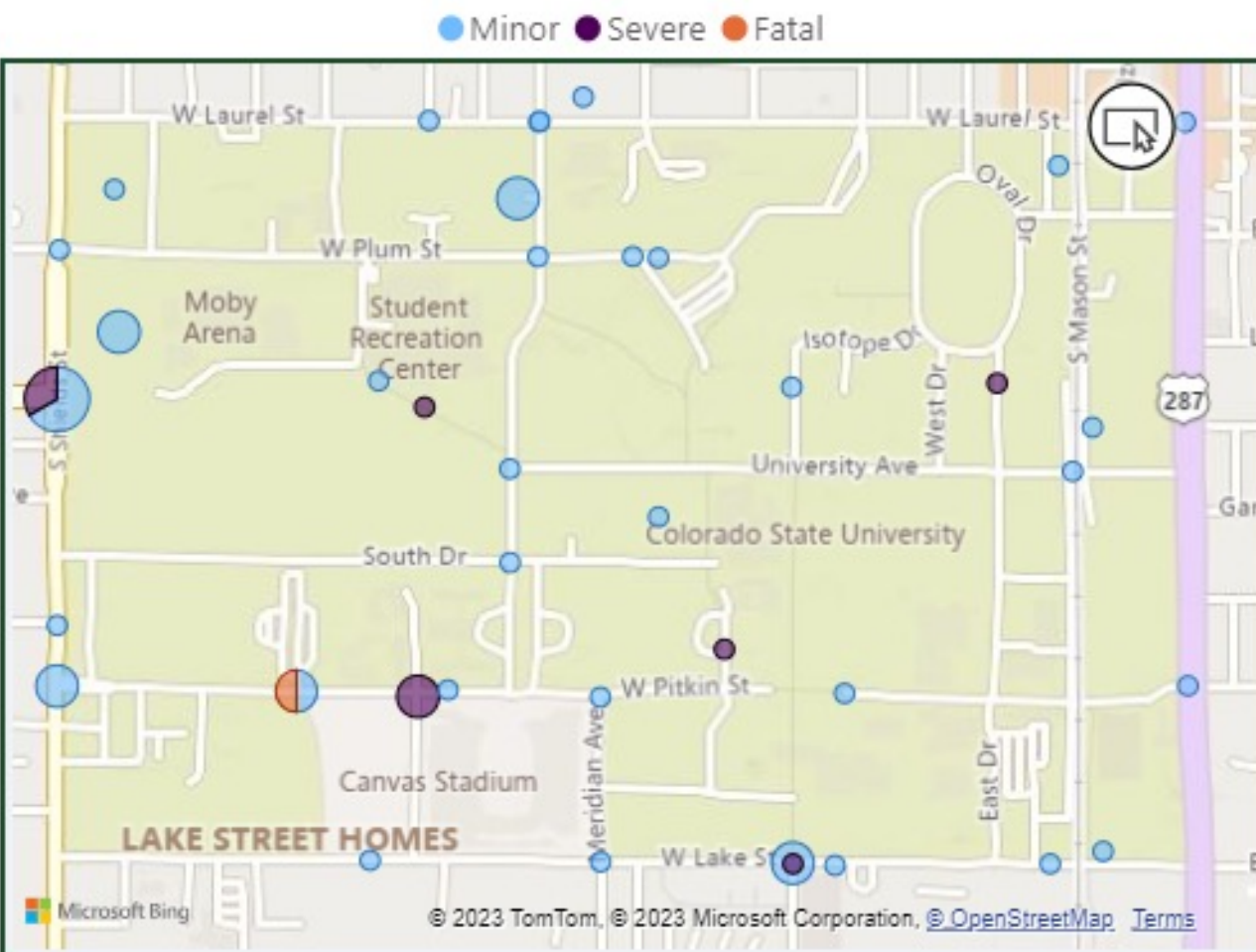
- Officially Reported
- Self-Reported

#### Academic Year

- Select all
- 18/19
- 19/20
- 20/21
- 21/22
- 22/23
- 23/24

\*Academic Year is defined as August 1 through July 31.

Severity	Count	Trend	Percentage of Total
Minor	44		84.62%
Severe	7		13.46%
Fatal	1		1.92%
<b>Total</b>	<b>52</b>		<b>100.00%</b>



Mode	veh_count	%GT veh_count
Vehicle	56	57.14%
Bicycle	32	32.65%
Pedestrian	7	7.14%
E-Scooter	2	2.04%
Skateboard	1	1.02%
E-Bike	0	0.00%
E-Skateboard	0	0.00%
Roller Blades/Skates	0	0.00%
Scooter	0	0.00%
Unknown	0	0.00%
<b>Total</b>	<b>98</b>	<b>100.00%</b>

Crash Type	Total	Trend	Percentage of Total
Vehicle and Bike	15		28.85%
Vehicle and Vehicle	15		28.85%
Bike and Bike	6		11.54%
Vehicle and Pedestrian	5		9.62%
Solo Bike	4		7.69%
Bike and Pedestrian	2		3.85%
CarE-Scooter	1		1.92%
PedestrianCar	1		1.92%
Solo Scooter	1		1.92%
Solo Vehicle	1		1.92%
Vehicle and Skateboard	1		1.92%
<b>Total</b>	<b>52</b>		<b>100.00%</b>



# Crash Data Dashboard



## Vision Zero – Crash Assessment Checklist

Time of Assessment: \_\_\_\_: \_\_\_\_ AM/PM

Date of Assessment: \_\_\_\_/\_\_\_\_/\_\_\_\_

Weather on Date of Assessment: \_\_\_\_\_

Date of Incident: \_\_\_\_/\_\_\_\_/\_\_\_\_

Police Report Available: YES / NO

### Onsite Assessment Evaluators:

- |          |           |
|----------|-----------|
| 1. _____ | 6. _____  |
| 2. _____ | 7. _____  |
| 3. _____ | 8. _____  |
| 4. _____ | 9. _____  |
| 5. _____ | 10. _____ |

### INSTRUCTIONS

Please complete each section of the checklist below identifying known deficiencies and action items. A narrative section follows each section of the checklist to capture written observations. A roadway and intersection template is provided to support the assessment.

### VEGETATION

Please observe any vegetation and landscaping that may impede readability of signage and line-of-sight. Use the narrative section below to explain your findings.

- Hanging over signage/lighting \_\_\_\_\_
- Restricting line-of-sight \_\_\_\_\_
- Encroaching on trail or sidewalk width \_\_\_\_\_
- Shading of road or trail \_\_\_\_\_
- Narrative \_\_\_\_\_

### PAVEMENT CONDITION

Please note the pavement condition for each item listed below. Please capture photographs of visible warping, linear cracking, and potholes. Use the narrative section below to explain your findings.

- Roadway \_\_\_\_\_
- Trail \_\_\_\_\_
- Sidewalk \_\_\_\_\_
- Bike Lane \_\_\_\_\_
- Intersection \_\_\_\_\_
- Crossings \_\_\_\_\_



# Crash Evaluation



# Working on...

Increased participation  
from marginalized groups

Minimizing conflicts  
between bicyclists and  
motorists

Safe storage policies and  
infrastructure for bicycles,  
especially those that  
require charging or other  
space accommodations





Thank you



Colorado State University







## Dickinson College: Biking Programs

Bicycle Friendly University Webinar, June 2024

[www.dickinson.edu/biking](http://www.dickinson.edu/biking)



# Dickinson College -1783

---

**Institution** Residential Liberal Arts

**Location** Carlisle, Pennsylvania

**Enrollment** 2,200 Undergraduates

**Programs** 43 majors + minors & certificate programs

**Employees** 250 Faculty, 800 Total

**Buildings** ~200  
2,000,000+ Sq. Ft.

**Campus** 307 acres (with farm)  
144 acres (main)

---





# Sustainability: An Institutional Value

Improving the human condition in this and future generations, equitably and without damaging environmental systems necessary to support healthy and vibrant societies.

- How we Learn
- How we Engage
- How we Live
- How we Operate
- How we Invest



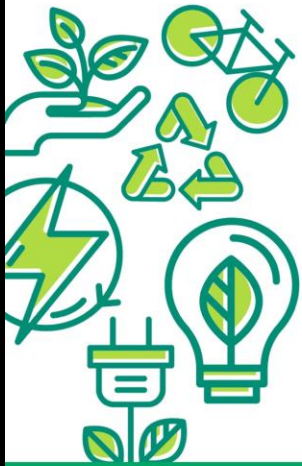


# 2020

THE YEAR OF  
**CARBON  
NEUTRALITY**



CLIMATE CHANGE NEEDS BEHAVIOR  
CHANGE AND DICKINSON NEEDS YOU



## JOIN US

- Walk, bike & ride-share (SEPT. 2019)
- Build a plant-rich diet (OCT. 2019)
- Purchase consciously (NOV./DEC. 2019)
- Turn lights off & unplug (FEB. 2020)
- Reduce food waste (MARCH 2020)
- Make commitments (APRIL 2020)
- Join with others (MAY 2020)

Dickinson

[dickinson.edu/CarbonNeutral](http://dickinson.edu/CarbonNeutral)

#DSONPROUD  
**CARBON  
NEUTRAL**  
together



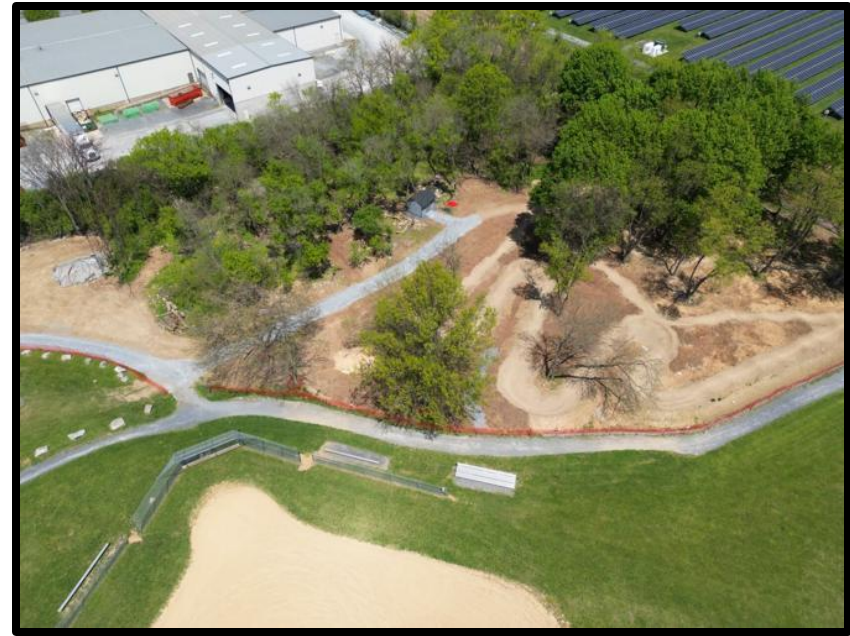


# Applications & Certification

- 2014: Silver
- 2018: Gold
- 2022: Gold







Engineering:





Racks:



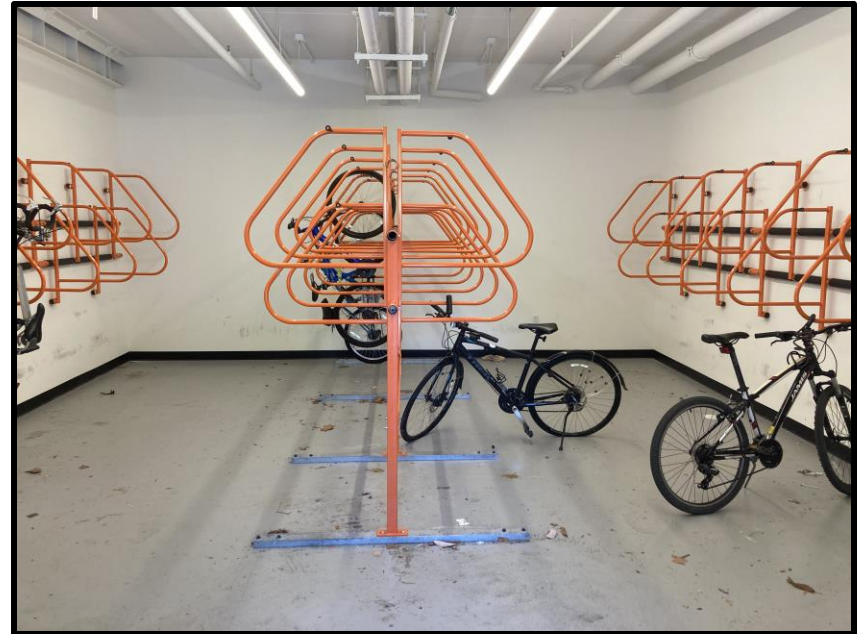




**DON'T LEAVE  
YOUR BIKE OUTSIDE**

**WINTER  
BIKE  
STORAGE**

**FREE. SAFE. INDOOR.**

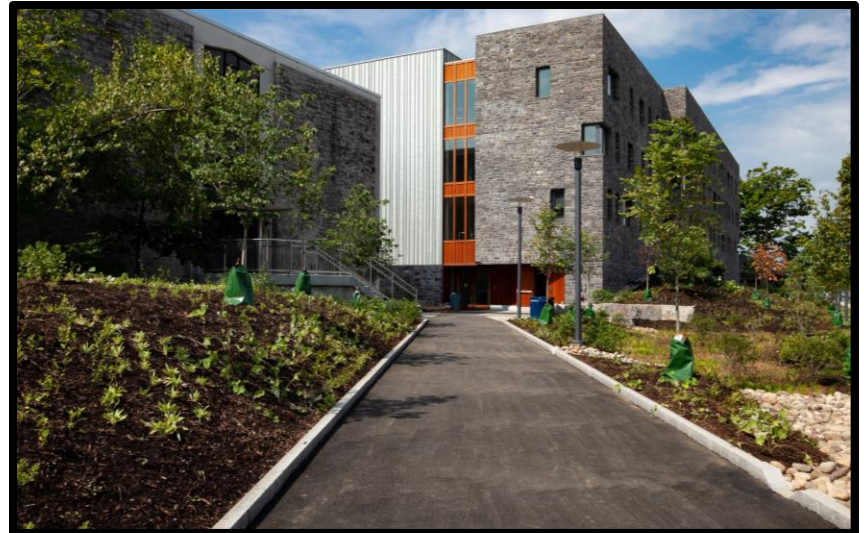


**CSE  
KAUFMAN 190  
DECEMBER 7, 8, & 12  
9 am to 3 pm**



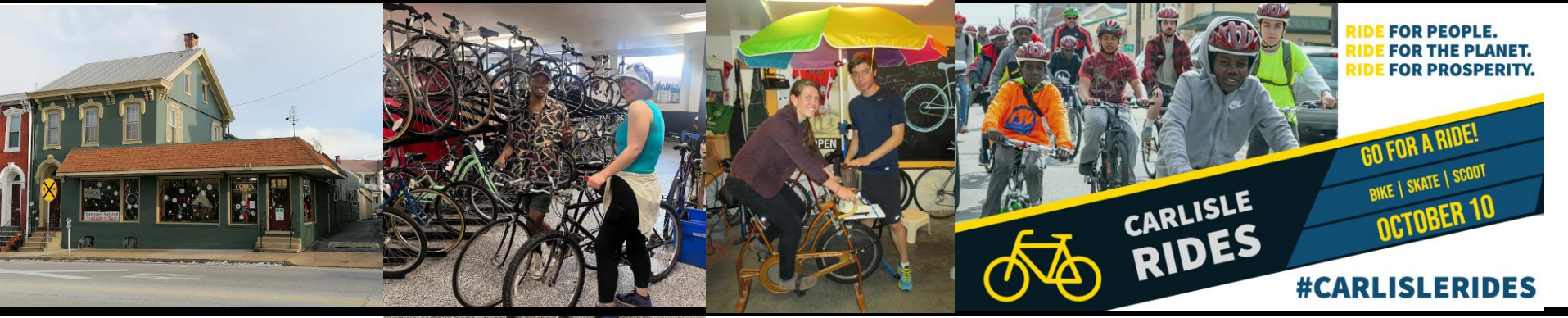
**Dickinson**  
CENTER FOR SUSTAINABILITY  
EDUCATION

**Storage:**



**Dickinson's High Street Residence Hall is LEED Platinum**



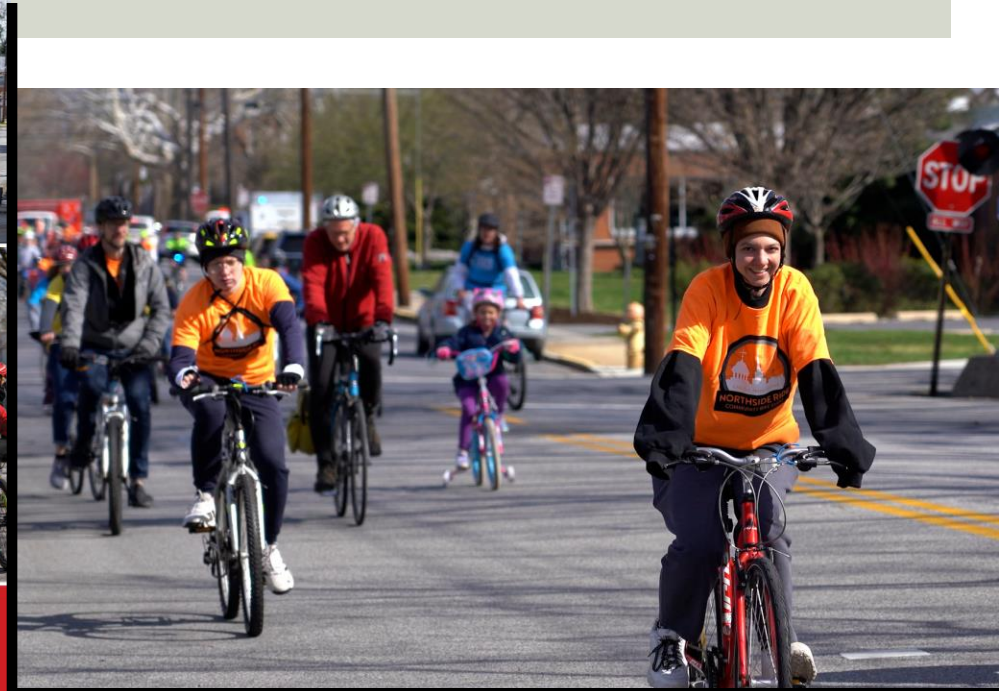


- Local bike shop discounts for students and employees
- Joint mechanic training classes
- Shop and Ride programs
- Maintenance workshops
- Community pump track
- Grants: Helmets/locks/lights for community members
- Bike donation coordination and flow
- Bike blender fundraisers

## Community Partnerships

Education & Encouragement





**SATURDAY, APRIL 20, 2024**  
**3.4-MILE GUIDED COMMUNITY BIKE RIDE**

**9 A.M. REGISTRATION, FREE BREAKFAST & BIKE REPAIRS • 10:15 A.M. BIKE RIDE DEPARTS**  
**MEET AT NEW LIFE COMMUNITY CHURCH, 64 E. NORTH ST., CARLISLE, PA**  
**ENDS AT HOPE STATION, 149 W. PENN ST., CARLISLE, PA**

Visit YWCA, Project SHARE, Hope Station and other local landmarks

Learn safe biking skills through fun activities at each site

**FREE** bike helmet, light, and lock for all participants



- **AGES 18+** need to sign waiver
- **AGES 14-17** need waiver signed by parent/guardian BUT can ride alone
- **AGES UNDER 14** need waiver signed by parent/guardian AND an adult to ride with them
- **RAIN DATE:** APRIL 27, cancellation announced via Facebook event

*Bringing together community members of all ages to explore our neighborhood safely, on bikes.*

FOR MORE INFORMATION PLEASE VISIT: [www.dickinson.edu/northsideride](http://www.dickinson.edu/northsideride)

Bikelisle • Borough of Carlisle • Carlisle BikeLab • Carlisle Tool Library • Carlisle Victory Circle  
Carlisle West Side Neighbors • Harrisburg Bicycle Club • Hope Station • Lifecycle Carlisle  
New Life Community Church • Project SHARE • YWCA Carlisle & Cumberland County

Dickinson

# Community Rides







Community Education







Encouragement:



# Department of Public Safety

**RED BIKES**  
**Free. Daily. Loan.**



Small  
(4'8"-5'6")

2341  
2342  
2343  
2344  
2345



Medium  
(5'3"-5'8")

2346  
2347  
2348  
2349  
2350  
2351  
2352  
2353  
2354  
2355

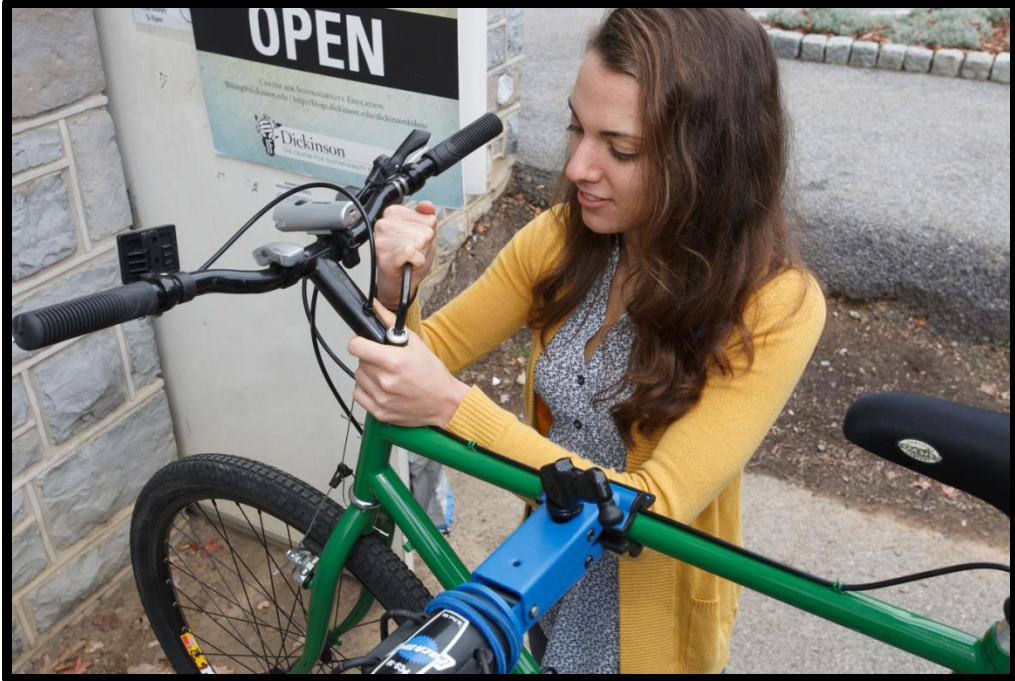


Large  
(5'7"-6'2")

2356  
2357  
2358  
2359  
2360







# Dickinson

CENTER FOR SUSTAINABILITY  
EDUCATION

## GREEN BIKES

## Free. Semester. Loan.

- 50 bikes available
- Single user
- \$25 refundable deposit
- Maintained 2x/year
- Online training required







Enforcement



# Evaluation and Planning

- Staffing and Committees
- Planning, Funding & Implementation
- < \$10,000/year
- Evaluating Ridership and Bicyclist Satisfaction
- Evaluating & Improving Safety
- Other Evaluation and Assessment Tools





# Questions and Answers



# Center for Sustainability Education

[www.dickinson.edu/biking](http://www.dickinson.edu/biking)

**Lindsey Lyons**  
**Director of Sustainability Learning**  
Dickinson College  
[lyonsli@dickinson.edu](mailto:lyonsli@dickinson.edu)  
717-245-1117

