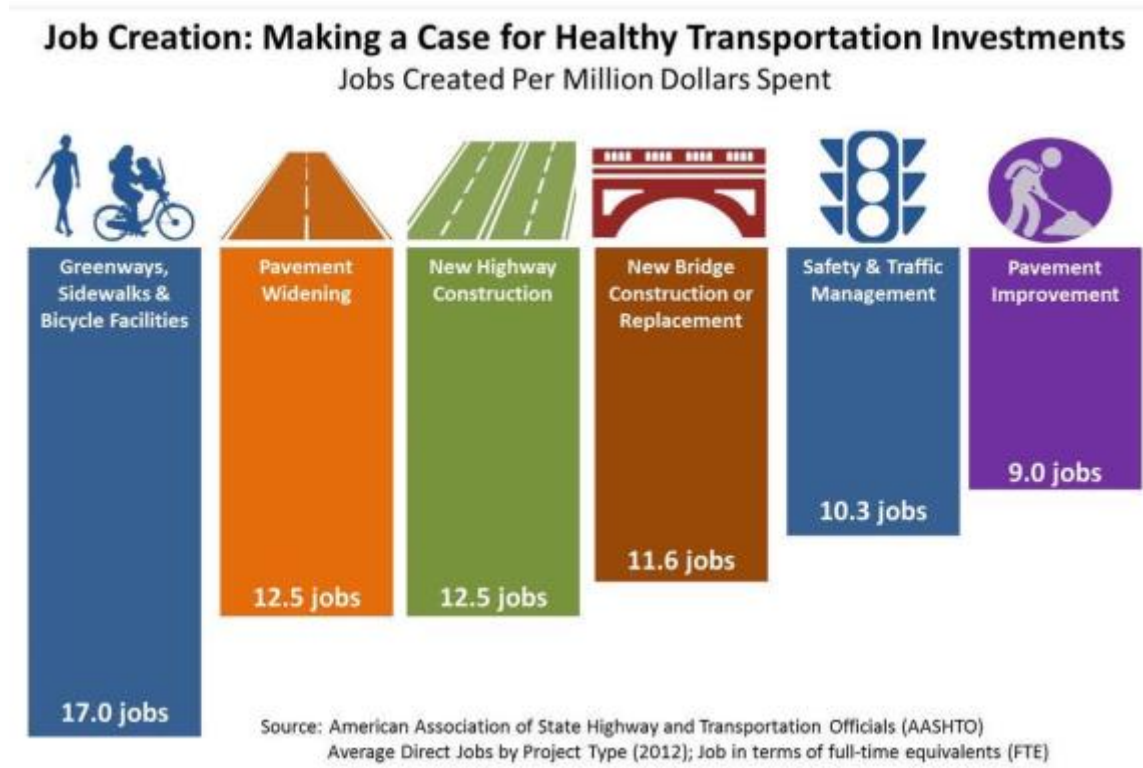




Bicycling and walking projects create more jobs per million dollars

A report by the National Cooperative Highway Research Program (NCHRP) found that Transportation Enhancement (TE) projects create more jobs per million dollars than other transportation projects.¹ Over 60 percent of those TE projects were bicycling and/or walking infrastructure projects.



¹ Dowell, Paula. NCHRP 08-36, Task 103 *Mining Recovery Act Data for Opportunities to Improve the State of Practice for Overall Economic Impact Analysis of Transportation Investments*, Cambridge Systematics. January, 2012. Page 43. Accessed December 16, 2016 [http://onlinepubs.trb.org/onlinepubs/nchrp/docs/NCHRP08-36\(103\)_FR.pdf](http://onlinepubs.trb.org/onlinepubs/nchrp/docs/NCHRP08-36(103)_FR.pdf)

A private study by the Political Economic Research Institute at the University of Massachusetts found similar results in a study of transportation projects in 14 cities across the United States.²

Table 2: National Average Employment Impacts by Project Type

Project type	Road	Bicycle	Pedestrian	Off-street trail	Number of projects	Direct jobs per \$1 million	Indirect jobs per \$1 million	Induced jobs per \$1 million	Total jobs per \$1 million
Total, all projects					58	4.69	2.12	2.15	8.96
Bicycle infrastructure only		*			4	6.00	2.40	3.01	11.41
Off-street multi-use trails				*	9	5.09	2.21	2.27	9.57
On-street bicycle and pedestrian facilities (without road construction)		*	*		2	4.20	2.20	2.02	8.42
Pedestrian infrastructure only			*		10	5.18	2.33	2.40	9.91
Road infrastructure with bicycle and pedestrian facilities	*	*	*		13	4.32	2.21	2.00	8.53
Road infrastructure with pedestrian facilities	*		*		9	4.58	1.82	2.01	8.42
Road infrastructure only (no bike or pedestrian components)	*				11	4.06	1.86	1.83	7.75



For more information contact: Caron Whitaker Caron@BikeLeague.org 202-215-3908

² Garrett-Peltier, Heidi. *Pedestrian and Bicycle Infrastructure: A National Study of Employment Impacts* Political Economic Research Institute, University of Massachusetts 6/20/2011 http://www.peri.umass.edu/fileadmin/pdf/published_study/PERI_ABikes_June2011.pdf